



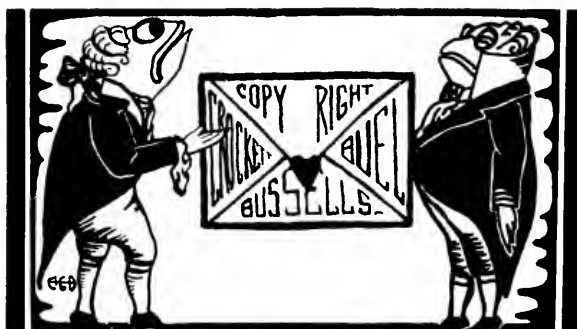
WALT DISNEY PICTURES



Digitized by the Internet Archive
in 2010 with funding from
Lyrasis Members and Sloan Foundation

<http://www.archive.org/details/marybaldwincolle1932mary>





THE BLUESTOCKING

PUBLISHED BY THE CLASS OF 1933

MARY BALDWIN COLLEGE



STAUNTON, VIRGINIA

1931-1932

VOLUME IX

To

DEAN PFOHL

**We, the Staff of 1932,
Dedicate This
Number of**

THE BLUESTOCKING

**With Love and
Appreciation**



FOREWORD



Come, reader, down the Rabbit Hole
And follow where we lead.
We take you through our Wonderland
With Alice, as you read.

So follow her adventures through—
She takes you by the hand,
That you may see, as she has seen,
Her strange, dear Wonderland.

CONTENTS



VIEWS

ADMINISTRATION

CLASSES

ORGANIZATIONS

CALENDAR

FEATURES

ATHLETICS

PUBLICATIONS

“She began by taking the
little golden key and un-
locking the door, then she
walked d o w n the little
passage and found herself
at last in the wonderful
garden.”



ADMINISTRATION BUILDING

McCLUNG

HILL TOP

MEMORIAL

ACADEMIC BUILDING

ADMINISTRATION BUILDING













Mary Baldwin

words by
Katharine Sea

music by
Lillian Strelson



Thou wert built of dreams Mary Baldwin, Mary Baldwin, woman's dream of



Love and true desire (Crazier dreams, passions and glowing night for me)



Using pure white fire Born to live to perish never, No inspire to



high endeavor to uphold that light for ever Mary Baldwin.

“W h a t do y o u know
about this business?” the
King said to Alice.

“Nothing,” said Alice.

“Nothing whatever?”
persisted the King.

“N o t h i n g whatever?”
said Alice.

“That’s very important,”
the King said.



A Message From The President

AS WE are thinking this year in terms of centennials and bi-centennials, may I call your attention to the fact that we will soon be preparing to celebrate the one hundredth birthday anniversary of Mary Baldwin College?

For ninety years our institution has occupied a distinctive position in the field of woman's education. Being only four years younger than the oldest chartered woman's college in the world, Mary Baldwin has naturally pioneered in her field. If one might be permitted to summarize her contribution to the cause of education, an accurate description might be found in a phrase that has become more or less a slogan: *The college with a background of culture and scholarship.* If to this are added the words of one of our number, descriptive of the college, *educationally efficient, socially selective, spiritually sincere*, one has a fair picture of Mary Baldwin, her history, her heritage, her aims and ideals.

To all of us who share in the Mary Baldwin life during the closing decade of her first century there come a privilege and an obligation, to formulate, to project, to attain a ten-year program for our college. Surely we should have a carefully worked out objective for these years, a well-formulated plan which will cause our closing century to mark something more than the passing of the years.

Remembering that our blessings have been made greater, our tasks easier, our opportunities broader, our heritage nobler, our traditions richer by those who during the first ninety years have made their contribution to Mary Baldwin, shall we not, building upon their foundations, by wise planning and faithful endeavor make these closing years of the century the best of all the years for Mary Baldwin? The closing century calls to all who love Mary Baldwin, and challenges us to give to her our hearty devotion and loyal service.

—L. WILSON JARMAN.



Board of Trustees

MARY BALDWIN COLLEGE.

REV. A. M. FRASER, D. D., LL. D.,*President*

HON. H. J. TAYLOR.....*Secretary*

MR. CHARLES S. HUNTER

HON. J. W. H. PIERSON

HON. HARRY ST. GEORGE TUCKER

REV. F. T. McFADEN, D. D.

COL. THOMAS H. RUSSELL

REV. A. M. FRASER, D. D.

REV. R. B. GRINNAN, D. D.

REV. W. J. McMILLAN, D. D.

MR. JOHN H. REED

JULIAN A. BURRUSS, PH. D.

HON. H. J. TAYLOR

MR. D. GLINN RUCKMAN

HON. W. H. EAST

HON. ROBERT F. HUTCHESON

H. D. CAMPBELL, PH. D.

MR. CAMPBELL PANCAKE

MR. SAMUEL W. SOMERVILLE

PROF. M. M. EDGAR

DR. HUNTER B. BLAKELY

DR. L. WILSON JARMAN

Executive Committee

A. M. FRASER, D. D., LL. D.

CHARLES S. HUNTER

HON. J. W. H. PIERSON

COL. T. H. RUSSELL

CAMPBELL PANCAKE

L. WILSON JARMAN

EDWARD P. VANDIVER, JR.
A. B., M. A., Ph. D.
Furman University
University of North Carolina
PROFESSOR OF ENGLISH

ELEANOR PARKER FON, A. B., M. A.
Upper Iowa University
Northwestern University
DIRECTOR OF DRAMATICS AND SPOKEN ENGLISH

ELIZABETH PFOHL, A. B., M. A.
Salem College
Teachers College, Columbia University
ASSISTANT PROFESSOR OF ENGLISH

MARY E. LAKENAN
A. B., M. A., B. R. E., M. R. E.
University of Colorado
Biblical Seminary in New York
PROFESSOR OF BIBLE

MILDRED E. TAYLOR
A. B., M. A., Ph. D.
Oxford College for Women
University of Illinois
PROFESSOR OF MATHEMATICS

ELIZABETH JUANITA GREER
A. B., Ph. D.
Agnes Scott College
Johns Hopkins University
PROFESSOR OF BIOLOGY AND CHEMISTRY

KENNETH L. SMOKE
A. B., M. A., Ph. D.
Ohio State University
PROFESSOR OF PSYCHOLOGY AND EDUCATION





FERNANDO Q. MARTINEZ
A. B., M. A., Ph. D.
Ogellthrope University
University of Virginia
PROFESSOR OF ROMANCE LANGUAGES

CLARA J. FLANSBURGH, A. B., M. A.
Maryland College
Middleburg College
Sorbonne, University of Paris
ASSISTANT PROFESSOR OF ROMANCE LANGUAGES

NANCY W. MCFARLAND, A. B., M. A.
Cornell University
Columbia University
Graduate Student, University of Chicago
ASSISTANT PROFESSOR OF ROMANCE LANGUAGES

FANNIE B. STRAUSS, A. B.
University of Virginia
INSTRUCTOR IN ROMANCE LANGUAGES

MARY SWANN CARROLL
A. B., M. A., Ph. D.
University of Tennessee
University of Wisconsin
Duke University
PROFESSOR OF HISTORY AND POLITICAL SCIENCE

MARTHA STACKHOUSE, A. B.
Agnes Scott College
REGISTERAR, ASSISTANT DEAN OF WOMEN

WILMAR ROBERT SCHMIDT, Ph. D.
Royal Conservatory, Leipzig
 PROFESSOR OF FINE ARTS

MARY FISHBURNE, B. Music
Coker College
Graduate, New England Conservatory of Music
Graduate Student, Harvard University
 ASSISTANT PROFESSOR HARMONY AND MUSIC

LYDA NEEBSON
Student of Marcella Sembrich, N. Y.; Kurt Schindler, N. Y.; Paul Eisler, Assistant German Conductor Metropolitan Opera; Michael Raucheisen, Berlin; Wilhelm Frcund, Hamburg; Romano Romani, N. Y.; New York University.
 ASSISTANT PROFESSOR OF MUSIC
 DIRECTOR OF VOICE AND PUBLIC SCHOOL MUSIC

ELIZABETH SCRUGGS, A. B., M. A.
Winthrop College
Columbia University
 ASSISTANT PROFESSOR OF ART AND HISTORY OF ART

MARY COLLINS POWELL, A. B., M. A.
North Carolina College for Women
Teachers College, Columbia University
 DIRECTOR OF PHYSICAL EDUCATION

CLARE KING, A. B., M. A.
Converse College
University of South Carolina
Draughon's Business College
 INSTRUCTOR IN EDUCATION
 SECRETARIAL SUBJECTS





MARGUERITE HILLHOUSE, A. B.
 ASSISTANT REGISTRAR
 SECRETARY TO THE PRESIDENT

JOHN B. DAFFIN, A. B., M. S.
Davidson College
University of Chicago
Graduate Student Johns Hopkins
University, 1928-'29
 BUSINESS MANAGER
 PROFESSOR OF PHYSICS

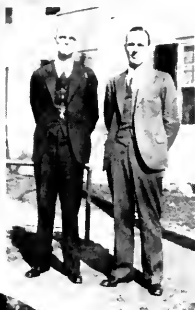
JAMES T. SPILLMAN, A. B.
Davidson College
 ASSISTANT BUSINESS MANAGER

MARGARET LANG, R. N.
 RESIDENT NURSE

HELEN C. BYSTER
 DEUTERAN

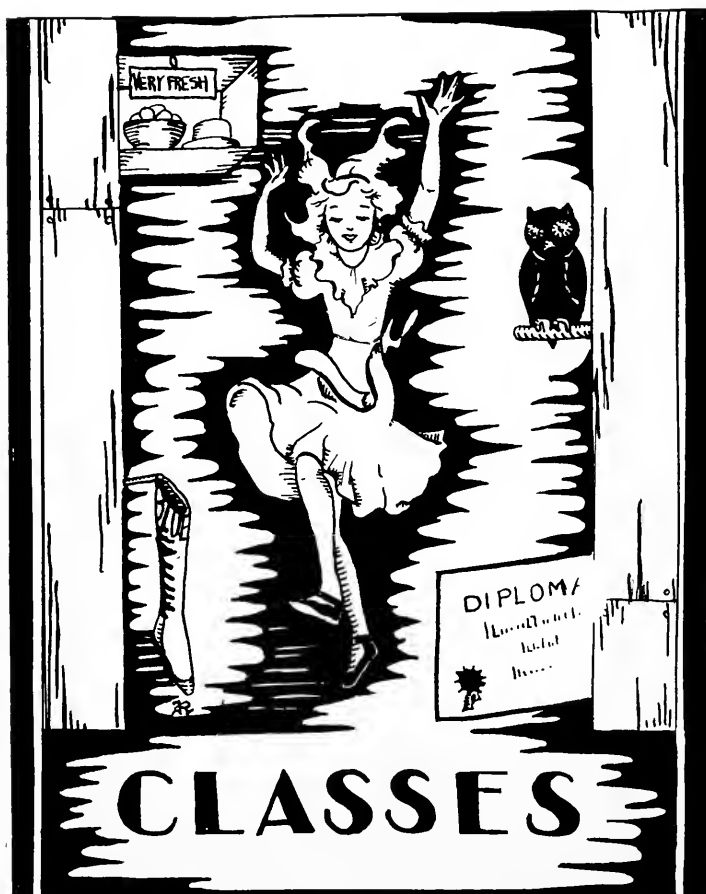
ELVA BELL ARCHER
 SUPERVISOR OF HALLS

ABBIE MORRISON McFARLAND, A. B.
Mary Baldwin Seminary
Student, Columbia University
 LIBRARIAN



FACULTY CAUGHT ON CAMPUS

“Either the well was very deep or she fell very slowly, for she had plenty of time as she went down to look about her, and to wonder what was going to happen next.”



THE SENIOR CLASS

Senior Song

While mountains guard thee in the Shenandoah,
And loyal daughters daily look to thee,
The spool of happy days is fast unwinding
Its colors rare for mem'ry's tapestry.
The tall white columns gleaming in the sunlight
The moonlight casting over all its spell.
The scarlet autumn, and the winters snowflakes—
O, Mary Baldwin, can we say farewell!

May laughter ring and dreams be ever golden,
Along the terrace there above the street,
May friendships live like truth's white flame a-glowing
Like truth's white flame that never meets defeat.
Where'er we be, we'll cherish with fond happiness,
That golden tapestry of memories' spell,
And ever we our faith and love will pledge thee,
So, Mary Baldwin, hail and farewell.



Senior Class Officers

HARRIET SEIM
President

KATHERINE REID
Vice-President

DR. KENNETH SMOKL
Sponsor

BARBARA FISHER
Secretary

ELIZABETH MCNEER
Treasurer

COLORS
Purple and Gold

MOTTO
Faciamus



LILLIAN HENDERSON
BELL

STAUNTON, VIRGINIA

*Candidate for Bachelor of Arts
Degree*

Day Student Club '29-'32; Granddaughters' Club '27-'32; Psychology Club '30-'32; Athletic Association '30-'32.

PAGES

SARA GEORGE HARRIS

MARGARET KING

ATTENDANTS

KATE DRAKE

NELL DUDLEY

"It looked good natured."



ALENE ELIZABETH
BREWSTER

STAUNTON, VIRGINIA

*Candidate for Bachelor of Arts
Degree*



Mary Baldwin Honor Society '32; Vice-President Day Student Club '31-'32; Secretary-Treasurer Music Club '31-'32; Program Committee Music Club '31-'32; Treasurer French Club '30-'31; Program Committee Day Student Club '29-'30; Day Student Club '29-'32; French Club '29-'32; Psychology Club '29-'32; Music Club '29-'32; Glee Club '30-'32; Choral Club '31-'32; Athletic Association '30-'32; Orchestra '29-'32.



PAGES
MILDRED KEANE
EMMA LAKE

ATTENDANTS
MILDRED KEANE
ELIZABETH LOUDERBACK

"I know I have to beat time when I learn music."



BILLIE TAYLOR BURKE
MT. AIRY, NORTH CAROLINA
*Candidate for Bachelor of Arts
Degree*
Transfer from Hollins College,
1930

Class Treasurer '30-'31; Music Club '30-'32; French Club '30-'31; Little Sisters' Club '30-'32;
Y. W. C. A. '30-'32; Athletic Association '30-'32; Y. W. C. A. Committee '30-'31; Glee Club
'30-'32; Cotillion Club '31-'32.

PAGES
CAROLINE CONLON
MARY COOKSON

ATTENDANTS
CAROLINE CONLON
ELIZABETH STEELE

*"You're thinking about something, my dear, and
that makes you forget to talk."*



FRANCES LOUISE
CRAFTON

STAUNTON, VIRGINIA

*Candidate for Bachelor of Arts
Degree*



President Day Student Club '31-'32; Presidents' Forum '31-'32; Day Student Representative Student Council '31-'32; Advertising Manager *The Bluestocking* '31; Vice-President Day Student Club '30-'31; Secretary of Junior Class; Vice-President of Class '29-'30; Secretary Day Student Club '29-'30; Advertising Manager of *The Miscellany* '29-'31; Cotillion Club '29-'32; Little Sisters' Club '28-'32; Psychology Club '30-'32; Y. W. C. A. Publicity Committee '28-'29; Athletic Association '30-'32; Class Basketball Team '29-'30; Class Hockey Team '30-'32.



For thirteen happy years, you see,
From the third grade to her A. B.,
This maid to Mary Baldwin came
The only Senior of such fame.

PAGES

ELIZABETH WILSON

EMOLYN COFFEY

ATTENDANTS

MARGARET DEMOND

VIRGINIA HOUSE

"I know something interesting is sure to happen."



CAMILLA DUNHAM

WARM SPRINGS, VIRGINIA

*Candidate for Bachelor of Arts
Degree*

Music Club '28-'31; Alpha Rho Tau '30-'32; Green Masque '30-'31; Orchestra '28-'31; French Club '28-'32; Psychology Club '31-'32; Athletic Association '28-'32; Y. W. C. A. '28-'32.

PAGES

CAROLINE RIVES

GERTRUDE HANNAH

*"Speak in French when you can't think of the
English for a thing."*



BARBARA ELIZABETH
FISHER

SUTTON, WEST VIRGINIA

*Candidate for Bachelor of Arts
Degree*

Transfer from Blackstone
College, 1929



Class Secretary '31-'32; Dining Room Proctor '31-'32; Y. W. C. A. Choir '29-'31; Glee Club '29-'32; Y. W. C. A. '29-'32; Athletic Association '29-'32; Psychology Club '29-'32; Music Club '29-'30; Assistant House President '30-'31; Y. W. C. A. Committee '31-'32; Senior Hockey Team '31-'32.



PAGES

BETTY ZOLLINGER

BETTY SCHUTZ

ATTENDANTS

MARY CORNELL

LOUISE EACHES

"Oh, don't bother me, I never could abide figures."



MARY CARLTON GAVIN
KENANSVILLE, NORTH CAROLINA
*Candidate for Bachelor of Arts
Degree*
Transfer from Peace Institute,
1930

Athletic Association '30-'32; Y. W. C. A. '30-'32; Class Basketball Team '31-'32; Athletic Council '31-'32; Glee Club '30-'32.

PAGES

HILLIARD McCALLISTER
GRACE CROWE

ATTENDANTS

HILLIARD McCALLISTER
GRACE CROWE

*"There was nothing else to do, so she soon began
talking again."*



LOUISE ELIZABETH
HAMLET
PHENIX, VIRGINIA
*Candidate for Bachelor of Arts
Degree*



Devotional Committee Y. W. C. A. '30-'31; Treasurer Y. W. C. A. '31-'32; Finance Committee Y. W. C. A. '31-'32; Class Hockey Team '29-'32; Basketball Team '31-'32; Alpha Rho Tau '31-'32; Y. W. C. A. '29-'32; Athletic Association '29-'32.



PAGES
MILDRED COLEMAN
EMILY JEAN HIGBEE

ATTENDANTS
MILDRED COLEMAN
EMILY JEAN HIGBEE

*"It's barley-sugar and such things that make people
sweet-tempered."*



GOLDIE IRENE HARRIS

MARTIN'S FERRY, OHIO

*Candidate for Bachelor of Arts
Degree*

Spanish Club '28-'32; Music Club '27-'32; Psychology Club '28-'32; Y. W. C. A. '27-'32; Athletic Association '27-'32.

PAGES

SARA GEORGE HARRIS

CHARLOTTE TAYLOR

ATTENDANTS

ANNE DAVIS EDGAR

WINIFRED HOLSKE

"I'm sure those are not the right words."



SUSIE GEE HARRIS
VICTORIA, VIRGINIA
*Candidate for Bachelor of Arts
Degree*



President Athletic Association '31-'32; Student Council *ex-officio* '31-'32; Presidents' Forum '31-'32; Vice-President Athletic Association '30-'31; Athletic Council '29-'32; Hockey Team '28-'31; Captain Sophomore and Senior Hockey Teams, Basketball Team '29-'32; Captain White Basketball Team '29; Captain Sophomore Baseball Team, Monogram Club '30-'32; Y. W. C. A. '28-'32; Social Service Committee '29-'30; Cotillion '29-'32; Psychology Club '28-'32; Little Sisters' Club '28-'32; Athletic Association '28-'32.



PAGES
CAROLINE CALDWELL
GENEVIEVE RICHMYRE

ATTENDANTS
REBECCA MORRISON
CAROLINE RIVES

*"Oh, 'tis love, 'tis love, that makes the world
go round."*



MARGARET PAGE
HOWARD

GREENSBORO, NORTH CAROLINA

*Candidate for Bachelor of Arts
Degree*

Transfer from Hollins, 1929

President Cotillion Club '31-'32; Vice-President Spanish Club '30-'31; Presidents' Forum '31-'32; Cotillion Club '29-'32; Spanish Club '29-'31; Psychology Club '30-'32; Music Club '30-'32; Y. W. C. A. Committee '31-'32; Little Sisters' Club '29-'32; Green Masque '30-'31; Athletic Association '29-'32; Y. W. C. A. '29-'32.

PAGES

Kitty SHANKWEILER
Charlotte BOWEN

ATTENDANTS

Kitty SHANKWEILER
Lucy Jo DAVIS

*"They are waiting on the shingle—
Will you come and join the dance?"*



ELIZABETH
MONTGOMERY HURT

WYTHEVILLE, VIRGINIA

*Candidate for Bachelor of Arts
Degree*

Transfer from
Stonewall Jackson College, 1930



World Fellowship Committee Y. W. C. A. '30-'31; Finance Committee Y. W. C. A. '31-'32; Secretary Athletic Council '31-'32; Leader of Basketball '31-'32; French Club '30-'31; Y. W. C. A. '30-'32; Athletic Association '30-'32; Psychology Club '30-'32; Music Club '31-'32; *Campus Comments Staff* '31-'32.



PAGES

MARGARET GRABBILL

CHARLOTTE TAYLOR

ATTENDANTS

MARGARET GRABBILL

CHARLOTTE TAYLOR

"Let's go on with the game."



JOSEPHINE ELIZABETH
HUTCHESON

EDINBURG, VIRGINIA

*Candidate for Bachelor of Arts
Degree*

Y. W. C. A. '29-'32; Athletic Association '29-'32; Secretary Y. W. C. A. '31-'32; Psychology Club '31-'32; Vice-President Psychology Club '32; Music Club '29-'32; French Club '31; Alumnae Editor *Campus Comments* '32; Latin Club '29; Y. W. C. A. Room Committee '30-'32; Hockey Team of Class '32; Hall Proctor '32.

PAGES

RUTH HOPEWELL

HARRIET SEIBERT

ATTENDANTS

RUTH HOPEWELL

VIRGINIA MANSON

*"'I'd rather see that done on paper,' she said, as she
took out her memorandum-book, and
worked the sum for him."*



DOROTHY COMPTON
HUTCHINGS

UTICA, NEW YORK

*Candidate for Bachelor of Arts
Degree*



Student Council '31-'32; Presidents' Forum '31-'32; President Psychology Club '31-'32; Class Hockey Team '29-'32; Business Manager THE BLUESTOCKING '30-'31; Hall Proctor '30-'31; Music Club '29-'31; Green Masque '31-'32; Athletic Association '28-'32; Y. W. C. A. '28-'32; Varsity Hockey '30-'31; Business Manager *Campus Comments* '28-'30; Treasurer Sophomore Class; Y. W. C. A. Finance Committee '29-'30; Y. W. C. A. Room Committee '28-'29; Treasurer Latin Club '28-'29; White Hockey Team '28-'29.



PAGES

FLORA BOZARTH
BARBARA MERRIAM

ATTENDANTS

FLORA BOZARTH
VIRGINIA POINTER

"What have you got to say for yourself?"



MARTHA ELIZABETH
KUHN

RICHMOND, VIRGINIA

*Candidate for Bachelor of Arts
Degree*

Y. W. C. A. '28-'32; Athletic Association '28-'32; Music Club '28-'32; Y. W. C. A. Choir '28-'32; Psychology Club '29-'32; French Club '28-'32; Hockey Team '30; Glee Club '30.

PAGES
BARBARA SMITH
SALLIE RUDE

ATTENDANTS
SALLIE RUDE
ANNE BEBB PATTON

*"Child of the pure unclouded brow
And dreaming eyes of wonder."*



MARY MARGARET LEE
 RONCEVERTE, WEST VIRGINIA
*Candidate for Bachelor of Arts
 Degree*



Secretary Student Council '29-'30; Recorder of Points '30-'31; Second Vice-President Student Government '31-'32; Assistant Editor THE BLUESTOCKING '30-'31; President Music Club '31-'32; Cheer Leader '29-'31; *Campus Comments* Staff '28-'29; Y. W. C. A. Choir '31-'32; Y. W. C. A. Devotional Committee '29-'30; Y. W. C. A. Social Service Committee '30-'31; Grand-daughters' Club '28-'32; Psychology Club '30-'32; Three Arts Club '31-'32; Presidents' Forum '31-'32; Y. W. C. A. '28-'32; Athletic Association '28-'32; Orchestra '30-'32; Glee Club '30-'32.



PAGES
 ELIZABETH STEELE
 MARTHA SCHOMBURG

ATTENDANTS
 KITY DRUMMOND
 ANN RUDD

*"Come away, my dears! It's high time you were
 all in bed."*



FLORENCE HELTON
McANDREW

CHADRON, NEBRASKA

*Candidate for Bachelor of Arts
Degree*

Transfer from Ward-Beimont,
1930

Y. W. C. A. President '31-'32; Green Masque '30-'32; Psychology Club '30-'32; Basketball Team '31; Y. W. C. A. '30-'32; Athletic Association '30-'32; Presidents' Forum '31-'32; Student Council, *ex-officio* '31-'32.

PAGES

MARY BELL ARCHER

JOYCE MARKILLIE

ATTENDANTS

MARY BELL ARCHER

JOYCE MARKILLIE

*"Somehow it seems to fill my head with ideas—
although I don't know exactly what they are."*



ELIZABETH HUNTER
McNEER
HUNTINGTON, WEST VIRGINIA
*Candidate for Bachelor of Arts
Degree*



Class Treasurer '31-'32; Sport Leader '31-'32; *Miscellany* Staff '31-'32; Hockey Team '31;
Psychology Club '31-'32; Cotillion Club '29-'32; Riding Club '30-'31; Basketball Team '28-'29;
Baseball Team '30; Music Club '28-'31; Alpha Rho Tau '30-'31; Green Masque '30-'31;
Y. W. C. A. '28-'32; Athletic Association '28-'32.



PAGES
LUCY JO DAVIS
ELIZABETH TERRELL

ATTENDANTS
GERDA QUELCH
DOROTHY GAILLARD

*"I do hope it'll make me grow large, for really, I'm
quite tired of being such a tiny little thing."*



VIRGINIA BENNETT
MABEN

BLACKSTONE, VIRGINIA

*Candidate for Bachelor of Arts
Degree*

Vice-President Student Council '31-'32; Secretary Student Council '30-'31; Publicity Committee Y. W. C. A. '28-'29; Chairman Publicity Committee '29-'31; Secretary Sophomore Class '29-'30; Art Editor THE BLUESTOCKING '29-'30, '30-'31; House President Hill Top '31-'32; Treasurer Athletic Association '31-'32; Athletic Council '31-'32; Secretary-Treasurer Alpha Rho Tau '31-'32; Psychology Club '28-'32; Three Arts Club '28-'32; Cotillion Club '29-'32; Y. W. C. A. '28-'32; Athletic Association '29-'32.

PAGES

JACQUELINE CRINKLEY

JACQUELINE PERKINS

ATTENDANTS

EVILYN WOOD

MARY ELIZABETH WEEDEN



*"If she smiled much more, the ends of her mouth
might meet behind!"*

KATHRYN EVA MILLER

COVINGTON, VIRGINIA

*Candidate for Bachelor of Arts
Degree*



Editor of *Campus Comments* '31-'32; Secretary Spanish Club '30-'31; President Spanish Club '31-'32; Secretary Presidents' Forum '31-'32; Glee Club '29-'31; Y. W. C. A. Choir '30-'32, Cotillion Club '29-'32; Three Arts Club '31-'32; Alpha Rho Tau '30-'31; Green Masque '30-'31; Y. W. C. A. '29-'32; Athletic Association '29-'32.



PAGES

GLORIA JONES

ROSANNAH MILEAM

ATTENDANTS

ANNE THETFORD

HARRIET WEAD

"Come let's hear some of your adventures."



ANVILLA KATHARINE
PRESCOTT

GARDEN CITY, NEW YORK

*Candidate for Bachelor of Arts
Degree*

President of Class '28-'29, '29-'30; Editor-in-Chief BLUESTOCKING, '31; President of Student Government '31-'32; Student Government Representative Y. W. C. A. Cabinet '31-'32; Y. W. C. A. Committee '29-'31; Presidents' Forum '30-'31-'32; Chairman Presidents' Forum '31-'32; *Miscellany* Staff '29-'30; Y. W. C. A. '28-'32; Psychology Club '29-'32; Music Club '28-'32; French Club '28-'30; Athletic Association '28-'32; Cotillion Club '29-'32.

PAGES
SUSIE PETERS
LOUISE EACHES

ATTENDANTS
LOIS PRESCOTT
EUPHEMIA SMITH

*"Now, I daresay you noticed I was looking
rather thoughtful."*



KATHERINE LONSDALE
REID

STAUNTON, VIRGINIA

*Candidate for Bachelor of Arts
Degree*



Presidents' Forum '31-'32; Vice-President Athletic Council '31-'32; Vice-President Senior Class, President Green Masque '31-'32; Vice-President Green Masque '30-'31; Varsity Basketball Team '31; Y. W. C. A. '28-'31; Athletic Association '28-'32; French Club '30-'31; Dramatic Club '28-'32; Day Student Club '28-'32; Sophomore Hockey Team, Senior Hockey Team, Captain Sophomore Basketball Team, Captain Junior Basketball Team, Captain Senior Basketball Team; Junior Class Sport Leader.



PAGES

JEAN CLARK

MARY TEMPLIN FAULKNER

ATTENDANTS

ELIZABETH WILSON

JEAN CLARK

"Oh, my cars and whiskers, how late it's getting."



ELIZABETH BLANCHE
SCOGGIN

DRAKES BRANCH, VIRGINIA

*Candidate for Bachelor of Arts
Degree*

Treasurer of Class '28-'29; *Campus Comments* Staff '28-'30; Devotional Committee Y. W. C. A. '29-'30; Student Friendship Committee '30-'31; Class Hockey Team '31-'32; BLUESTOCKING Staff '30-'31; Class President '30-'31; Editor-in-Chief *Miscellany* '31-'32; Glee Club '29-'31; Alpha Rho Tau '30-'31; Green Masque '30-'32; Music Club '28-'32; French Club '30-'32; Psychology Club '31-'32; Y. W. C. A. '28-'32; Athletic Association '28-'32; Cotillion '28-'32; Presidents' Forum '30-'32; Tennis Champion '28-'29.

PAGES

MARY BUSSELLS

ANN RUDD

ATTENDANTS

MARY BUSSELLS

CAROLINE CALDWELL

"What a clear way you have of putting things."



HARRIETT SEEM
 BATH, PENNSYLVANIA
*Candidate for Bachelor of Arts
 Degree*



President Senior Class '32; President Glee Club '30-'31; Presidents' Forum '30-'32; Secretary-Treasurer Music Club '30-'31; Assistant Advertising Manager BLUESTOCKING '31; Recorder of Points '31-'32; Spanish Club '28-'32; Glee Club '28-'32; Music Club '28-'31; Psychology Club '31-'32; Cotillion Club '29-'32; Y. W. C. A. Choir '29-'31; Social Service Committee Y. W. C. A. '30-'31; Y. W. C. A. '28-'32; Athletic Association '28-'32.



PAGES
 KATHARINE CROCKETT
 RUTH EDMUNDS

ATTENDANTS
 BETTY SCHUTZ
 BETTY ZOLLINGER

"How cheerfully she seems to grin."



LILLIAN HORTON SMITH

RIDGWAY, PENNSYLVANIA

*Candidate for Bachelor of Arts
Degree*

President Glee Club '32; President Music Club '30-'31; Chairman Program Committee Music Club '32; Presidents' Forum '30-'32; Glee Club '30-'32; Music Club '29-'32; Cotillion Club '29-'32; Granddaughters' Club '29-'32; Little Sisters' Club '29-'32; Psychology Club '31-'32; Y. W. C. A. Choir '29-'32; Y. W. C. A. '28-'32; Athletic Association '28-'32.

PAGES

MOLLY BENSON

FRANCES WOOLFORD

ATTENDANTS

MOLLY BENSON

FRANCES WOOLFORD

"But what am I to do?"



THERESA MCCORMICK
WORTHINGTON

BEL AIR, MARYLAND

*Candidate for Bachelor of Arts
Degree*



Athletic Association '28-'32; Y. W. C. A. '28-'32; Staff *Campus Comments* '28-'29; Assistant Business Manager *Campus Comments* '29-'30; Assistant Business Manager BLUESTOCKING '30-'31; Y. W. C. A. Program Committee '29-'30; Y. W. C. A. World Fellowship Committee '30-'31; Class Hockey Team '30-'31-'32; Class Basketball Team '30-'31-'32; Class Vice-President '30-'31; Chairman Life Service Group '31-'32; House President Hill Top '31-'32; Psychology Club '31-'32; Green Masque '31-'32; Cotillion Club '32; Mary Baldwin Honor Society '31-'32.



PAGES

KITTY DRUMMOND

KATHRYN LITTLE

ATTENDANTS

GLORIA JONES

KATHARINE CROCKETT

*"What does it matter where my body happens to
be? My mind goes on working all the same!"*



JOAN FRANCES GEIRKE AND HER MOTHER, FRANCES DISSALEL-GEIRKE, EX-MEMBER OF
THE CLASS OF '32

Down The Rabbit-Hole

ALICE opened a book which was full of pictures—pictures in which the people were moving about and talking to each other.

In the first picture she saw a group of girls dressed all alike in white suits and white hats. They were lined up two by two on the terrace in front of a spacious old white building. She heard one of the girls, who wore the white garb with ease and assurance, say to another girl, who looked very uncomfortable, "Now here, you see, it takes all the running you can do, to keep in the same place. If you want to get somewhere else, you must run at least twice as fast as that!"

Alice was a very smart little girl, even though she was only seven and a half years old, so she knew that these girls were Freshmen who were marching to church the first Sunday morning of the 1928-'29 session of Mary Baldwin College. The first girl was a Freshman who had graduated from the Seminary, and she was telling her inexperienced classmates what college was like.

Then followed many pictures showing this group of thirty-eight girls doing many queer things. There were pictures of the girls going down-town on their fortnightly trips in the company of a teacher, and having tango roll and ice-cream at the Bakery. Another one was of the time they went to the Picture Show. An interesting picture was of a clamorous group ordering sundaes from the Matron on Saturday afternoon—the one time this privilege was allowed. Then followed a kaleidoscope picture of girls hurrying to bed at ten o'clock; of girls surreptitiously slipping into one another's rooms during the day; of working off demerits in Study Hall; of attending Sunday School, Vespers, morning and evening church services each Sunday; of sending back letters unopened received from young men whose names were not on the writing lists; of looking at but not tasting boxes of food other than fruit; of attending Mail Call; of passing male acquaintances with not a glance of recognition lighting up the eye. The costumes in the pictures remained the same except when the white suits were changed for black and the white hats were replaced by grey ones.

There were pictures of the Freshmen attending Teas; of them electing Class Officers and choosing a Sponsor; of many of them playing on the White and the Yellow athletic teams; of them entertaining the Juniors at a banquet. Then there was a picture of the whole school doing honor to President Coolidge on the occasion of his visit to Staunton.

The last picture in the group was of Commencement, with the Freshman group at the end of the Academic Procession, but singing just as feelingly as the others the Alma Mater.

After these pictures, there followed three pages headed June, July, and August, each crammed full of pictures, but each with such a different setting that Alice was afraid she would get them mixed up in her head, so she hurried over them until she reached the page headed September, 1929. There she saw the familiar group against the same terraced and white-pillared background. This time there were no uniforms, no lines marching to church, to town, or to the movies—these latter were replaced by smaller groups who went places they liked to go and did things which they liked to do.

In this second collection of pictures Alice saw a new President of the College, a new Dean, and a new Student Government Association. She saw the Sophomores as being among the first signers of the Student Government Constitution.

Then followed pictures of the Sophomore-Freshman hike; of the first Senior Investiture Service with the Sophomores acting as pages, and of the celebration of

the one hundredth anniversary of the birth of Miss Mary Julia Baldwin; of the hockey games, of the basketball games in which the Sophomores won the championship; and of the presentation of "Lady Windermere's Fan."

Again the last picture in the collection showed the Academic Procession, but with the Sophomores moved up one place in the line.

Alice rapidly skipped through the next pages until she came to the girls, whom she now considered old friends, looking "as large as life and twice as natural." There were many familiar faces gone from the group, but there were four new ones who were transfers from other colleges.

The events then pictured were: The Junior-Freshman Tea; the Investiture Service for the Seniors; the Juniors busily at work on THE BLUESTOCKING; the Alice Foote McDougal Tea given by THE BLUESTOCKING staff; the installation of new regulations and the receiving of additional privileges; the Freshman-Junior Pajama Party; the Spring elections in which many Juniors were chosen to hold responsible positions; the Athletic Association banquet, at which many Juniors received awards; the Junior-Senior banquet, at which the work of the Junior class, THE BLUESTOCKING was presented; and again Commencement with the Juniors very near the head of the line.

"And thick and fast they came at last, and more and more and more," thought Alice as she came to the last group of pictures—made up of the activities of twenty-five girls—the Class of 1932 of Mary Baldwin College.

First she saw her friends being invested with the cap and gown at the service on Miss Baldwin's birthday. Next she saw and heard the announcement of the winning of first class honor rating by the 1931 BLUESTOCKING. Then there was the presentation of "The Cradle Song" by the Senior class. Again she saw the 1931 BLUESTOCKING winning honor by being awarded the silver cup in the contest sponsored by the Virginia Intercollegiate Press Association. One of the best pictures was that of the Seniors and the entire college rejoicing upon the admission of Mary Baldwin College into the Southern Association of Colleges and Secondary Schools. The next pictures were of the Seniors' Christmas Party for the college employees, of the Carol Singers, the Christmas parties of the various clubs, and the final picture of this section showing the Seniors leaving for their last Christmas vacation.

The opening pictures of the second semester group showed the addition of one new member to the Senior class, and the organization of the Mary Baldwin Honor Society with two Seniors as charter members. There were more pictures of Seniors playing basketball; of Seniors doing practice-teaching in the county schools; of Seniors being entertained by the Juniors and Sophomores at banquets.

The pictures were now crowded together on the pages, but the pages were becoming very, very few. They portrayed the last examinations; the Class Day program with the Seniors and their attendants; the May Queen and her court; and the final picture—the Seniors leading the Academic Procession and singing for the last time the Alma Mater.

Alice shut the lovely picture book and sat with closed eyes, hearing in her ears the strains of "Thou wast built of dreams, Mary Baldwin," and half believing that she had helped to sing it.

KATHRYN E. MILLER,
KITTY REID,
THERESA WORTHINGTON.

Looking Glass House

ONE COLD snowy day Alice was curled up in a big chair before the fire talking drowsily to the white kitten who was purring contentedly on her lap.

"Do you hear the snow against the window panes, Kitty? How nice and soft it sounds! Do you know, Kitty, I'd like to visit Looking Glass House again, wouldn't you?—and see if anything has been changed since we were there last. What do you say Kitty—shall we?"

And she hopped out of her chair and climbed up on the mantle taking the kitten with her—and looked in the mirror.

"Oh-h—look, Kitty! It is different—it's not like our room any more. Why it's a street in front of a house—a lovely big house too—and here comes a little boy crying. I wonder what is the matter with him. Oh look, at the lovely lady in the door and all those little boys and girls around her. I bet she is his Mother and they are his brothers and sisters. Here comes another woman—Kitty, I bet she is a school teacher because—but hush! they're talking."

"I'm terribly sorry, Seemie that Junior came home crying. He was apparently all right when he left school but I know what is the matter with him—he was stubborn about the project he was working on and"

"That's all right, T. I can understand but if you *will* run a nursery school!"

"It's fading Kitty! Now it's changed—there's a big stage and lots of people. I wonder—they must be practicing, Kitty, and I guess it's an opera, because there is an orchestra, and only operas have music. And look—there are only two women in the orchestra all the rest are men—but one of the women is conducting it—isn't she playing a piccolo, Kitty? I think that is what they are called. And look at the director she doesn't seem to be pleased—sh-h-h—Listen!"

"All right, Mene—a little more pep in that orchestra now, please. This is not a funeral march—it's a lively dance."

"I'm sorry, Kitty Reid, but that's the way Lil Smith wrote the libretto—we can't interpret it any differently."

"Something will have to be done. Page—send the ballet out again and you repeat your solo dance. And tell the Prima Donna to hurry with her dressing—we've got to get through. Oh—there you are, Villa! We were waiting for you—we've got to get these pictures taken—so they will get on the air tonight. All right, Goldie—get your camera ready. Camilla—will you stop playing that fiddle—it's driving me nuts!"

"It's changing again, Kitty! Oh-h isn't this fun? I wonder what it will be this time? Do you smell tea and scones like I do, Kitty? Why, look—it's a tea room and there are two women sitting at that little table both talking at once! Aren't they impolite? And here comes another woman with a big notebook to join them. Let's listen, Kitty, and maybe we can hear them too!"

"Hello, girls, I'm sorry I am late but I thought I'd never find this place."

"That's all right, Scoggin. We can't expect a busy newspaper woman to always be on time and we've been having one of our old time arguments on the relative merits of Psychoanalysis and Behaviorism—but we'll stop now and listen to you."

"I just wanted to talk to you all. Helton has become so famous as a Behaviorist that I wanted to get an interview—and you, Hutch—I suppose you are still dealing with social service cases?"

"Oh Kitty, look—it's all dark now and I can hardly see! There is an open space with a little hut in it and look at all the trees. Why, Kitty—it looks like those pictures of the jungle that we have at home. You know the African jungle where all the wild animals are. What do you suppose it is? Oh—I bet I know—it's missionaries. See there is a lady in white with a lot of little African children around her—and she is giving them little boxes. Can you see what's written on them, Kitty? Oh, I can it says "Hidden Talents" Listen, do you hear them singing? It must be Sunday School cause they are singing the same songs that we do—and look at the woman playing the organ! Sh-h-h—let's listen!"

"Trib— shall we try No. 162 now? I think I can play it now after all the practice I've had."

"Very well, Lile Hurt—though that's hard to sing in the native tongue. We'll try it— ready? Wait a minute! What's all that noise? Someone is thrashing around among the trees. Oh it's Kuhnle— and jabbering French for all she's worth."

"Look, Trib—! Let she's trying to teach French to our pet ape!"

"There it goes again, Kitty! Oh—look—what a lovely room! And such lovely snowy linen and gleaming silver and bright candles! Oh—it must be a big dinner party. Look at all the pretty ladies in their beautiful frocks and the men look so nice and oh, Kitty there is an army officer—see his uniform? And what lovely things they are eating—oh it makes me hungry just to see them, doesn't it you, Kitty? Sh-h-h—the little man at the end of the table is going to speak—let's listen, Kitty. . . ."

"Friends, we are gathered here tonight to celebrate the fifteenth anniversary of my wife's graduation from Mary Baldwin—the girl that you once knew as Little Fisher. We endeavored to get as many of the class as possible together but previous engagements kept many from being with us on this memorable occasion. We are indeed fortunate in having such a number of celebrities present and in order to fully acquaint the adopted members of the class—myself included—with the accomplishments of these famous women I will present each of them to you. First Dr. Elizabeth Hamlet, noted plastic surgeon, famous for her skillful remodeling of countenances, who during the last few years has studied in Paris, Vienna, and Berlin. Next Mme. Schuman-Hanke Lee the world famous contralto who has just returned from an Arctic Concert Tour with her fourth husband, Count de Loony. Then we have a noted athlete whose action pictures we have often seen—in television—the Olympic ski champion Miss Susie Harris. Next we have a merger of talents—who of you ladies has not worn an exclusive "Maybur Frock" designed by our friend Virginia Malen and executed by Billie Burke? We always expected to find one representative of this illustrious class in the Army and now allow me to present the wife of the Commandant of S. M. A. Polly Gavin, as we knew her. Next we have a newly matriculated doctor—none other than Elizabeth McNeer who has just received her Ph. D. in Domestic Science from Yale. Some of us have very pleasant memories of vacations spent on one of the few remaining ranches of the West the owner being Frances Crafton who flew here tonight with her husband to help us celebrate. Next we have Lillian Bell who has just returned from Alaska where she has been very actively engaged in knitting sweaters for the unemployed Eskimos. The last one of the group is a member of the teaching profession Josephine Hutcherson, the well known professor of Orthography at the University of Virginia."

(Resounding Applause)

"Your honor, on behalf of the assembled members of the class of '32, I take great pleasure in expressing our deep appreciation to you and your charming wife—our little Pal, Fisher—for entertaining us so royally here at the Governor's Mansion on this great day. May we wish you both much success and happiness."

Mice jumped up to applaud with the rest of the dinner party. She hit the floor with a resounding bump and the kitten meowed protestingly. She opened her eyes and found herself sitting on the floor by the chair she had been curled up in—fast asleep.

"Oh, Kitty!" she exclaimed, "It was only a dream after all!"

M. M. LEE,

D. C. HUTCHINGS.

Senior Class Will

WE, THE class of 1932, of the college of Mary Baldwin in the city of Staunton and state of Virginia, considering the uncertainty of this college life and being of sound mind and memory, do make and publish this our last will and testament in manner and form following, that is to say:

FIRST: We direct that all of the faculty, members of the administration, and employees of Mary Baldwin College be shown the respect and deference due them after our departure.

SECOND: We give and bequeath to the student body the dwellings and lot on which we now reside, to house them during their pursuit of learning and happiness at Mary Baldwin.

THIRD: We hereby give the custody of the incoming Freshman Class, while they remain underclassmen, to the present Sophomore Class so long as they remain in school.

FOURTH: We give and bequeath all of the residue of our dignity, real and imaginative, to the present Freshman Class, share and share alike, as tenants in common, to be bestowed upon them respectively as they come to be Seniors. In case any one of them should leave the college we direct that her share shall return to the class.

FIFTH: We appoint our friends, the Junior Class, executors of this our last will and testimony, hereby revoking all former wills made by us.

SIXTH: Due to the fact that certain members of our class have outstanding talents and characteristics that they wish to be carried on, the following wish to make certain donations.

1. Alene Elizabeth Brewster leaves her appreciation and skill of music to Anna Catherine Holland.
2. Barbara Elizabeth Fisher leaves her math troubles behind.
3. Mary Carlton Gavin leaves her gift of gab to Gertrude Messer.
4. Camilla Dunham leaves her French idioms to Gloria Jones.
5. Page Howard bequeaths her crocheting to Frances Woolford.
6. Billie Taylor Burke leaves her daily walks to Idolene Fitzgerald.
7. Dorothy Compton Hutchings leaves her pet expressions to Babe Smith.
8. Mary Margaret Lee leaves her vaudeville tendencies to Betty Buel.
9. Frances Louise Crafton leaves her ability to shag to the first class that have men to dances, if they are still slugging.
10. Lillian Henderson Bell bequeaths her willingness to accommodate to the Presidents' Forum.
11. Katherine Lonsdale Reid takes her dramatic ability with her but leaves footsteps for Emelyn Coffee.
12. Elizabeth Hunter McNeer leaves her merit grades to any 1933 senior needing them.
13. Elizabeth Montgomery Hurt leaves her recipe for curling fluid to any young aspirants to the business.
14. Anyilla Katharine Prescott leaves her poise to Katharine Crockett.
15. Martha Elizabeth Kuhn leaves her applicability to Caroline Conlon.
16. Kathryn Eva Miller leaves her married men to Betty Keith Harrison.
17. Susie Gee Harris leaves her hope chest to Beatrice Watson.
18. Florence Helton McAndrew leaves her premier ghost performance to the next Halloween party.
19. Theresa McCormick Worthington is leaving quite a number of students for someone else to coach.
20. Virginia Bennett Mabon leaves her high optimism to the next Student Council.
21. Lillian Horton Smith leaves her enthusiasm (?) to Jacqueline Crinkley.
22. Goldie Harris leaves her "stick ability" to Frances Robinson.
23. Josephine Elizabeth Hutcheson bequeaths her math ability to Virginia House and Anne Thetford.
24. Elizabeth Hamlet leaves an extra year of college to Mary Buck.
25. Elizabeth Blanche Scoggin leaves her individuality in dress to Susie Peters.
26. Harriett Seem leaves her good sense of balance to Claire Davis.

In witness whereof we have herunto subscribed our names this second day of March in the year of our Lord, one thousand nine hundred and thirty-two.

—THE SENIOR CLASS.

Codicil 1—And we're leaving Dr. Snook.

Reveries

Sun on columns tall and white,
Rain drops calling in the night,
Great round moon through tall black trees,
Sound of wind through rustling leaves,
Still blue hills and great grey clouds,
Whistling trains so clear and loud,
Snow flakes sifting on the town,
Making clean the dirty brown,
Light cool winds and lordly storms,
Giving things fantastic forms,
Rustle of paper, turn of a page,
Hours spent with some wise sage,
Lights that welcome, doors that smile,
Roads that wind by mile on mile,
Breath of spring time, fall's last leaf,
Dogwood flung out like a wreath
For winter's funeral white as snow,
Or wedding veils, long row on row,
In between the Redbud's caught
Some are brides and some are not,
Young fresh grass and deep blue sky,
Loves forgotten by and by,
Hard fought games and ambling walks,
Idle chats and serious talks,
Moments spent and minutes given,
Goals attained for which we've striven.

Calm and quiet on the slope—
Guiding onward youth's young hope,
Stately beauty, gentle poise,
Aged tradition, modern joys,
College lives with a timeless grace
A gentle woman with a lovely face.

**THE
JUNIOR CLASS**

The Junior Class

IN THE fall Mary Baldwin once more held out her welcoming arms to the stream of incoming students. The Juniors entered with a feeling of pride as they enrolled as upper-classmen, and with a sense of joy as they renewed old ties of friendship.

Thoroughly imbued with that spirit and tradition of their Alma Mater, the Juniors took their sister class of Freshmen in hand and introduced them socially at a lovely tea in the school parlors. Later in the year the Freshmen reciprocated with a banquet in honor of the Juniors. A co-operative and friendly feeling intertwines the two classes and persists throughout the year.

The traditional honor and duty of the class is the publication of THE BLUESTOCKING. Early in the year, under the guidance of the class sponsor, Miss Strauss, and the editor, Mary Bussells, schemes and preparations were set working to present the best annual ever published, and credit will certainly go to this publication. By custom, a BLUESTOCKING Tea was given in celebration of St. Valentine's Day. This theme was carried out in the color scheme of red and white decorations. Waitresses served the guests, while entertainers provided amusement in songs and dances.

But the culmination of all social activities for the Junior class was the annual Junior-Senior Banquet held during the celebration of George Washington's birthday. The table and room were bedecked with flowers and flags, and a short skit taken from this period in history was presented.

In athletics this year, although the class has not had the higher end of scores, they have merited praise for their energy and sportsmanship. Junior names likewise appear on the honor rolls and in the various clubs.

The Juniors regret saying good-bye to the Seniors, and rejoice in having another year in school.



Junior Class Officers

KATHARINE CROCKETT
President

MARGARET DEMUND
Vice-President

MISS FANNIE STRAUSS
Sponsor

HARRIET SEIBER
Secretary

CHARLOTTE TAYLOR
Treasurer

COLORS
Lavender and White

MOTTO
Sidera ferimus



Junior Class

FIRST ROW: Christine Armstrong, Martha Bell, Charlotte Bowie, Virginia Brand.

SECOND ROW: Jean Brehm, Frances Greer Brown, Mary Buck, Elizabeth Bucl.

THIRD ROW: Mary Bussells, Mildred Coleman, Katharine Crockett, Lucy Jo Davis.



Junior Class

FIRST ROW: Margaret DeMund, Nell Dudley, Ruth Edmonds, Margaret Grabill

SECOND ROW: Sara George Harris, Emily Jean Higbee, Ruth Hopewell, Gloria Jones

THIRD ROW: Mildred Keane, Margaret King, Elizabeth Louderback, Gladys Lyles



Junior Class

First Row: Virginia Manson, A. C. Marshall, Louise Randol, Caroline Rives

Second Row: Sallie Ruhe, Harriet Seibert, Kathryn Shankweiler, Martha Simmons

Third Row: Barbara Smith, Frances Tabb, Charlotte Taylor, Frances Thomas, Elizabeth Wilson

**THE
SOPHOMORE CLASS**

The Sophomores in Retrospect

WE SEE the Class of '32 now coming together after the first long separation of its members one from the other. At points north, south, east, and west, happy greetings ring out in stations where train connections are made, all the roads leading to our Rome, Mary Baldwin College in the metropolitan city of northwest Virginia, Staunton. Their first gathering as long-lost friends is quite exciting. Everybody and everything, such as the refinishing of the dining room and the other innovations, look strangely familiar. How nice it is to have Little Sisters for the first time and to be the sister class of the Seniors! Another nice feature about returning to college is that one is given a new opportunity to make friends among the Freshmen.

After much questioning on the part of the upper classmen as to when initiation will begin, the great, important week gets under way at last. For the Juniors it is merely a time of happy memories of the days when such a drudgery as making up one's own bed was unheard of; for the Sophomores it is a joyous week which comes only once in a life-time; for the Freshmen it is—perhaps the less said about it the better. Nevertheless, the entertainment, with "Fishes, Fishes, In the Brook" for its theme song, which is presented by the Freshmen as a part of the chastisement due them, proves, on the whole, to be very cute, though not fully appreciated by some of the Sophomores. The annual court, the culmination and climax of Sophomore supremacy, takes place at the end of initiation week. After the court the whole college is entertained in the lounge by the Sophomore class.

In athletics, the Sophomores prove themselves really efficient. This year they defeated every other class in both hockey and basketball, thus holding a record for being the champions in a major sport three times in a year and a half, for, in addition to their two great victories this year, they also won in basketball as Freshmen.

* * * * *

The Sophomores presented a program in chapel Friday morning, April first.

One more outstanding event which will involve the Sophomores is the buffet supper at which they will entertain their sister class, the Seniors. This function, which promises to be very delightful, will take place the evening of April twenty-second at the Country Club.

* * * * *

The Sophomores feel that so far this year has been a successful one. They are indebted to Miss Stackhouse, who continues from last year to be their co-operative and very much interested sponsor, for her wise guidance; they admire the splendid qualities of leadership found in Grace Crowe, their able president for the past year.

The Sophomores hope that the coming two years may find them growing in wisdom and in power and that, as a result of this, they may, as a class, bring to this institution much which will be *non pro tempore sed aeternitate*.



Sophomore Class Officers

GRACE CROWL
President

FRANCIS WOOLFORD
Vice-President

MISS STACKHOUSE
Sponsor

KITTY DRUMMOND
Secretary

CAROLINE CALDWELL
Treasurer

COLORS
Scarlet and Gold

MOTTO
Dix ratio et lux



Sophomore Class

FIRST ROW: Joanna Adams, Helen Hope Arthur, Catherine Baylor, Mary Eleanor Benson, Dorothea Bertelle

SECOND ROW: Page Black, Flora Bozarth, Isabel Briola, Rosalie Brown, Caroline Caldwell

THIRD ROW: Georgia Carson, Doris Coville, Jacqueline Crinkley, Grace Crowe, Katherine Drake

FOURTH ROW: Kitty Drummond, Helen Fowler, Julia Gouch, Betty Keith Harrison



Sophomore Class

FIRST ROW: Matilda Haynes, Susan Hoge, Anne Holman, Catherine Holland, Thelma Hulvey

SECOND ROW: Frances Lackey, Mary Larrick, Agnes Latham, Kathryn Little, Willard McCaleb

THIRD ROW: Mary Lou McCutcheon, Louise McDonald, Mildred Mawhinney, Barbara Merriam
Elizabeth Montgomery

FOURTH ROW: Rebecca Morrison, Marjorie Mower, Janice Moyer, Jacqueline Perkins



Sophomore Class

FIRST ROW: Jacqueline Phillips, Virginia Pointer, Anne Robertson, Frances Robinson, Elizabeth Schutz
 SECOND ROW: Euphemia Smith, Elizabeth Steele, Bessie Stollenwerck, Elizabeth Terrell, Emily Timberlake
 THIRD ROW: Helen Waide, Mary Weeden, Pace Welton, Mary J. West, Evelyn Wood
 FOURTH ROW: Frances Woodford, Elizabeth Young, Mary Gracie Young, Catherine Zimmerman

**THE
FRESHMAN CLASS**

Freshman Notes

MYSTIC and alluring—many days of reverie and plans—of castle-building and high inspirations; so the summer days passed by for those of us who were to be Freshmen the following September here at Mary Baldwin. As yet those massive white pillars meant nothing to us, they shielded none of our cherished secrets and friendships. The first rays of an early autumn sun filtered through the friendly shade trees on the front terrace, making a sort of "You are welcome here" appearance; and like Alice in Wonderland, not knowing what to do or what to expect next, we timidly knocked on the great white portal and awaited entrance. Beyond, there lay the realization of all our hopes and dreams. Before long the great door swung open and as I remember now someone "labeled" us, so to speak, and then led us to our rooms. After several days of adjustment our classes began; we had no idea what it was all about, but before we knew it, "Rat Week" started, and from all comment, we thoroughly proved the fact that girls don't need make-up to bring out beauty, for even with black cotton stockings, white shoes, and ribbon-tied pig-tails, we were quite outstanding. We sang and laughed. Before Soph Court we very splendidly entertained the Sophs and all their friends with a most unique and interesting skit composed of seventy-five smaller skits, the words of each exactly the same, but with different interpretation. At Soph Court we performed royally; who will ever forget M. Stuart catching flies on the organ bench?

All along we had heard of the noted big league hockey games, and before we were fully aware of it we were affording close competition for the cup. Remember that last game?

Oh! we had a class officer election and sponsor election, both of which proved very satisfactory, for we have profited in no small way under the guidance and supervision of Dr. Taylor, our sponsor, and Mary Cornell, our president.

To some of us, Thanksgiving meant home for the first time since September, and then just three weeks chuck-full of parties, plays, and receptions, and then Christmas—twenty-two days in which to grow tired of play and in which to gain the desire for seriousness, for we surely were in dire need of it for exams; however, as I look back on it now, it wasn't so bad; steady, earnest study, done consistently throughout the year, saves many a grey lock when exams approach. But no sooner said than done—for exam week came and went and basketball began. I'm asking you as friend to friend, the Fresh are pretty good sports, aren't they? And have you ever seen a cleaner, more expert game than the last one to decide the championship between the Frosh and Sophs? Felicitations! Sophs, you earned that game.

We wander a bit from the gym floor to the Stonewall Jackson Hotel for the Frosh-Junior formal cararet dinner at the bottom of the sea. Remember pretty Mary Cookson in her pearl satin evening gown as she stepped out of that huge oyster? Congratulations, Freshmen, keep up the good work.

My, how rapidly the time passes; Easter; the horse show; and now May Day; we were all more or less awe-stricken at the beauty of it; the same with Class Day, when several Freshmen had the privilege and honor to be Senior Attendants; and then along came exams, graduation, packing, parties, and at last a final farewell. Isn't it queer how firm attachments can be made in such a short time? Isn't it queer, no matter how tired we were, no matter how anxious for vacation we might have been, we were so reluctant to leave? One year has passed—eventful and successful—and now we leave an Alice no longer groping aimlessly—but this time a well advised and educated young lady—she is a Sophomore.



Freshman Class Officers

MARY CORNELI
President

VIRGINIA LEWIS HOUSTON
Vice-President

MISS TAYLOR
Sponsor

GERDA QUILTER
Secretary

MARY TEMPLE FAULKNER
Treasurer

COLORS
Green and White

MOTTO
Onward and upward



Freshman Class

FIRST ROW: Mary Bell Archer, Kerlyn Baker, Betty Baldwin, Anna Jane Barnes, Jessie Bear, Mary Blake

SECOND ROW: Leona Bowman, Evelyn Brown, Ellen D. Bush, Lilhan Campbell, Jean Clark,
Mary Virginia Clark

THIRD ROW: Sara Click, Emelyn Coffee, Caroline Coulon, Mary Cookson, Mary Cornell, Anne Cosby

FOURTH ROW: Christine Cottrell, Claire Davis, Virginia Davis, Louise Eades, Bernice Eckler,
Anne Davis Edgar



Freshman Class

FIRST ROW: Harriett Edmunds, Mary T. Faulkner, Idolene Fitzgerald, Dorothy Gillhard, Lois Jane Gardner,
Wimfred Goodman

SECOND ROW: Martha Gray, Gertrude Hannah, Marguerite Harper, Wimfred Holke, Virginia L. House,
Beverley Hoy

THIRD ROW: Lucille Klingaman, Frances Knight, Emma Lake, Nancy Larrick, Martha Logan, Wimfred Love

FOURTH ROW: Margaret Lunsford, Joyce Markille, Louise Martin, Marion Martin, Gertrude Messer
NOT IN PICTURE: Lucy Irvine



Freshman Class

FIRST ROW: Rosannah Milan, Helen Miller, Elizabeth Moody, Mildred Morrow, Anne Budd Patton,
Helen Patterson

SECOND ROW: Rosa Phipps, Lois Prescott, Gerda Quelch, Genevieve Richtmyre, Esther Robins,
Margaret Rouzer

THIRD ROW: Anne Rudd, Helen Ruppert, Martha Schomburg, Isabella Spillman, Marjorie Stuart,
Anne Thetford

FOURTH ROW: Harriet Wead, Virginia Weaver, Betty Welles, Beatrice Watson, Betty Zollinger
NOT IN PICTURE: Susie Peters



*"All in the golden afternoon
Full leisurely we glide."*

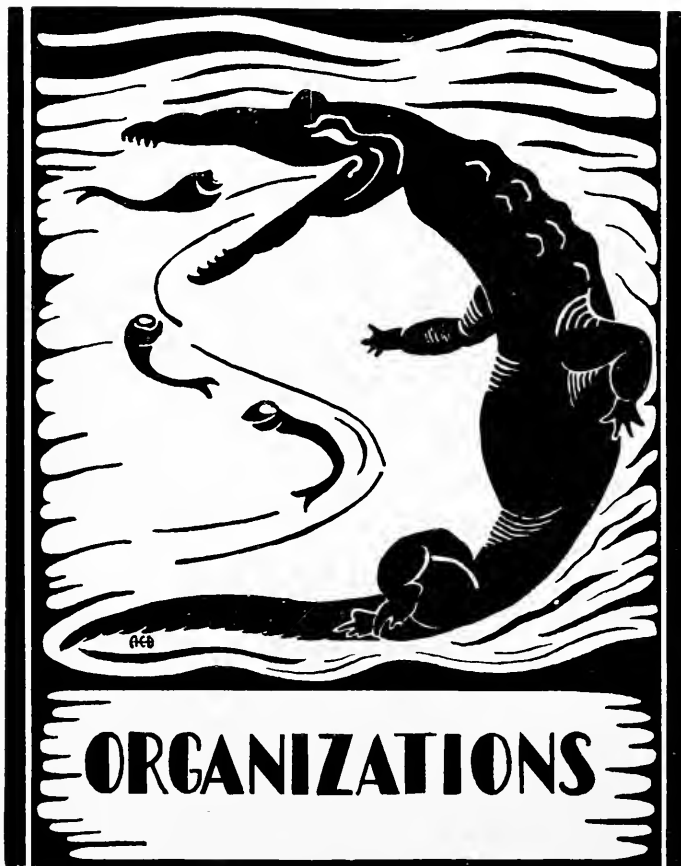
"How doth the little croco-
dile

Improve his shining tail,
And pour the water of the
Nile

On every golden scale!
How cheerfully he seems
to grin,

How neatly spreads his
claws,
And welcomes little fishes
in,

With g e n t l y smiling
jaws."





ANVILLE KATHARINE PRESCOTT
President Student Government Association

A Message From the Student President

MARY BALDWIN COLLEGE has succeeded in establishing beyond dispute her claim to the highest type of academic recognition, which means that she is equipping her students intellectually as the world demands a successful woman be equipped. But the world today requires that a woman have more than an intellectual equipment if she is to encounter life and triumph. She must also have a social equipment; she must know how to live in a social environment harmoniously; to blend her life into the life of the group in such a way that while still retaining her own individuality she permits the other individualities to exist. She must learn to lead as well as to follow, and to follow as well as she leads. The happy woman today must know how to face the bigger problems of living, and to find their correct solution as her more sheltered mother never did.

As a preparation for this type of thinking, Mary Baldwin College instituted three years ago a system of Student Government. Through its medium, every girl has a part in solving the problems involved in community living as they present themselves in a college group. She comes to know the value of certain rules of life because she herself applies them to solve lesser problems. She comes to think in terms of the other girls' welfare rather than her own. She learns to reason wisely, clearly, and thoroughly. The value of foresight becomes apparent when a situation fails to adjust itself as expected because contributing factors in the case were overlooked or unforeseen.

Always Mary Baldwin attempts to retain all that is of value out of the past, to adjust those values for the present social order and to build for the future of her students. Student Government is at present her medium, and success is crowning her efforts.



Student Council

FIRST ROW Virginia Mahen, *Vice-President and House President*; Dorothy Hutchings, *House President*; Theresa Worthington, *House President*; Mary Margaret Lee, *House President*; Gloria Jones, *House President*.

SECOND ROW Ruth Edmunds, *Secretary and Junior Representative*; Euphemia Smith, *Treasurer and Sophomore Representative*; Susie Harris, *J. A. President, member ex-officio*; Helton McAndrew, *J. H. C. J. President, member ex-officio*; Frances Craiton, *Day Student Representative*; Gertrude Hannah, *Freshman Representative*.

FACULTY ADVISORY BOARD

ELIZABETH PUGH, *Chairman*

NANCY W. McFARLAND

MARY COLLINS POWELL

MARY E. EAKINAN

MILDRED TAYLOR

MARTHA STACKHOUSE

KENNETH L. SMOKY, *Consultant Psychologist*

L. WILSON JARMAN, *ex-officio*



FIRST ROW: Anvella Prescott, Harriett Seem, Katharine Crockett, Grace Crowe, Mary Cornell,
Mary Bissells
SECOND ROW: Elizabeth Scoggin, Kathryn Miller, Helton McAndrew, Susie Harris, Charlotte Taylor,
Dorothy Hitchins
THIRD ROW: Katherine Reid, Elizabeth Buel, Lillian Smith, Mary Margaret Lee, Frances Crafton,
Page Howard

Presidents' Forum

OFFICERS

ANVELLA PRESCOTT *Chairman*
KATHRYN MILLER *Secretary*

The Presidents' Forum occupies a very unique and interesting place among the extra-curricula activities on the Mary Baldwin Campus. Its membership consists of the heads of all the organizations, and the Dean of Women. The President of the College is also a member. Its function is rather that of a clearing house for all difficulties and problems of an administrative nature. The Forum generally guides and shapes the bigger policies followed throughout the year in the various activities; it sets the spirit, determines the tone of the extra-curricula work. It is the oil that keeps the wheels turning regularly and smoothly—an indispensable part of all efficient living.



FIRST ROW: Helton McAndrew, Margaret Grabill, Kitty Drummond, Elizabeth Hamlet
 SECOND ROW: Grace Crowe, Christine Armstrong, Gloria Jones, Elizabeth Londerback, Theresa Worthington
 THIRD ROW: Elizabeth Buel, Frances Woolford, Anvlla Prescott

The Y. W. C. A. Cabinet

OFFICERS

HELTON McANDREW	<i>President</i>
MARGARET GRABILL	<i>Vice-President</i>
KITTY DRUMMOND	<i>Secretary</i>
ELIZABETH HAMLET	<i>Treasurer</i>

CABINET

MARGARET GRABILL	<i>World Fellowship Committee</i>
KITTY DRUMMOND	<i>Room Committee</i>
ELIZABETH HAMLET	<i>Finance Committee</i>
GRACE CROWE	<i>Student Friendship and Social Service</i>
GLORIA JONES	<i>Program Committee</i>
CHRISTINE ARMSTRONG	<i>Devotional Committee</i>
FRANCES WOOLFORD	<i>Social Committee</i>
ALICE ELIZABETH BUEL	<i>Publicity Committee</i>
ELIZABETH LONDERBACK	<i>Music Committee</i>
HELEN PATTERSON	<i>Freshmen Representative</i>
ANVILLA PRESCOTT	<i>Ex-Officio</i>
THERESA WORTHINGTON	<i>Ex-Officio</i>



FIRST ROW: Jacqueline Crinkley, Joanna Adams, Virginia Manson, Mary Margaret Lee, Kathryn Miller, Anne Thetford, Virginia House, Frances Crafton.

SECOND ROW: Lois Jane Gardner, Lucille Klingeman, Helen Patterson, Martha Simmons, Ruth Hopewell, Elizabeth Hurt, Charlotte Taylor, Page Welton, Helen Fowler, Louise McDonald, Katharine Crockett.

THIRD ROW: Anne Cosby, Leona Bowman, Elizabeth Montgomery, Betty Keith Harrison, Clare Davis, Helen Arthur, Nancy Larrick, Mary Larrick, Frances Thomas, Marion Martin, Elizabeth Londerback, Margaret Grabill, Anne Rudl, Matilda Haines, Mary Russell, Kitty Drummond.

FOURTH ROW: Harriett Seem, Elizabeth McNeer, Caroline Rives, Jacqueline Perkins, Catherine Zimmerman, Josephine Hutcheson, Jean Buchan, Margaret Lunsford.

FIFTH ROW: Elizabeth Seegin, Anvella Prescott, Kathryn Shankweiler, June Bowie, Page Howard, Virginia Davis, Gertrude Messer, Billie Burke, Virginia Punter, Lillian Smith, Frances Knight, Anne Holman, Evelyn Wood, Elizabeth Steele, Helen Miller.

NOT IN PICTURE: Dorothea Bettelle, Virginia Brand, Flora Bozarth, Alene Brewster, Mary Blake, Caroline Caldwell, Jean Clark, Grace Crowe, Iddlene Fitzgerald, Gertrude Hannah, Beverley Hoy, Gloria Jones, Elizabeth Kuhn, Kathryn Little, Mary Lou McCutcheon, Ann Bindl Patton, Marjorie Stewart, Harriet Seibert, Mary Elizabeth Weeden.

The Music Club

MARY MARGARET LEE.....	<i>President</i>
ALENE BREWSTER.....	<i>Vice-President</i>
LILLIAN SMITH.....	<i>Chairman Program Committee</i>
MISS FISHBURN.....	<i>Sponsor</i>
MISS NELSON.....	<i>Sponsor</i>

The Music Club is one of the largest and most outstanding organizations at Mary Baldwin. Its influence extends into all phases of the college activities.

Requirements for membership in the club are a love and appreciation of music. Besides this, however, a majority of the members are active, and give a varied and constructive program each month.

In the late fall, the Music Club, together with its two sister clubs, the Art Club and the Dramatic Club (collectively spoken of as the Three Arts Club), entertained the student body at a soiree. In the spring, the Music Club sponsored a concert given by the Davidson Glee Club, to which the students and also the town people were invited.



FIRST ROW: Louise Martin, Anne Thetford, Kathryn Miller, Betty Buel, Mary Margaret Lee, Frances Crafton
 SECOND ROW: Mary Temple Faulkner, Dorothy Gallard, Clare Davis, Nancy Larrick, Helen Arthur, Dorothea Bettelle, Emily Jean Huber, Mildred Coleman, Ruth Edmunds, Mildred Morrow.
 THIRD ROW: Martha Schomberg, Bernice Eckler, Harriet Weid, Lois Prescott, Virginia Mahen, Elizabeth Hamlet.
 NOT IN PICTURE: Isabel Brula, Caroline Caldwell, Caroline Conlon, Mildred Keane, Gladys Lyles, Frances Robinson, Helen Ruppert, Frances Woodford, Molly Young

Alpha Rho Tau

ELIZABETH BUEL *President*
 VIRGINIA MAHEN *Secretary and Treasurer*

Alpha Rho Tau, the Mary Baldwin College Art Club, is a branch of the *Three Arts Club*. The students of the Art Department automatically become members of the club. The functions of the club are to foster in the school and the community interest in and appreciation of art and art events by bringing to the school art exhibitions and lectures, to give the students not in the department, the opportunity for contact with art work under the guidance of the faculty adviser, and to bring before Mary Baldwin students and prospective students the Art Department and its function in the life of the college.

Each year, in connection with its other activities, the Art Club sponsors a December Gift Shop, for the student Christmas shopping, a sale of hand-painted and block-printed Christmas cards, and an Open-House at the opening of the Annual Spring Exhibition of students' work.



First Row: Martha Bell, Frances Crafton, Kathryn Miller, Martha Gray, Anne Thetford, Virginia House, Mary Margaret Lee.
 Second Row: Mary Bell Archer, Grace Crowe, Mary Cornell, Rosamah Milan, Esther Rohms, Mary Cookson, Annie Gosby, Sarah Chick, Lucille Klingaman, Helton McAndrew.
 Third Row: Ellen Bush, Emelyn Coffey, Margaret Rouzer, Betty Baldwin, Anna Jane Barnes.
 Standing: Janice Moyer, Isabel Spillman, Gerda Quick, Louise Eaches, Martha Simmons, Betty Welles, Sallie Rubie, Evelyn Brown, Christine Armstrong, Winifred Love, Mary Blake, Mary Virginia Clark, Mary Temple Faulkner, Jean Clark.
 Not in Picture: Dorothy Hutchings, Theresa Worthington, Marjorie Stuart, Elizabeth Scoggin, Kitty Reid, Bessie Stollenwerck, Elizabeth Wilson.

“The Green Masque”

KITTY REID *President*
 MARTHA GRAY *Secretary and Treasurer*

The Green Masque, which is the dramatic division of the Three Arts Club, holds bi-monthly meetings, one with the Art and Music Club, and one alone.

This year the standard of the Dramatic Club was raised by admitting new members only through tryouts and by setting up and adopting a constitution for the club.

The club and its program for the year were presented by a skit in chapel, and all girls who were interested in trying out for membership signed up at the Three Arts Tea, which was held early in the fall.

The activities during the year have consisted of two three-act and two one-act plays. The one-acts were given as programs for meetings, while the longer plays were open to the public. “The Swan,” by Molnar, was the three-act presented in the fall, and “Mr. Pim Passes By,” by Milne, was given in the spring.



FIRST ROW: Gertrude Messer, Susan Hoge, Harriett Seem, Dorothea Bertelle, Molly Benson, Barbara Fisher, Betty Keith Harrison, Mary Templin Faulkner, June Bowie, Betty Schutz, Ann Rudd, Jean Clark, Winifred Goodman.

SECOND ROW: Marjorie Stuart, Caroline Rives, Flora Bozarth, Catherine Zimmerman, Elizabeth Louderback, Josephine Hutcheson, Virginia Manson, Polly Gavin, Ruth Hopewell, Helen Patterson, Evelyn Wood, Louise McDonald, Betty Buel, Grace Crowe, Annie Cosby, Helen Fowler, Leona Bowman, Gerda Quelch, Louise Eaches, Mary Virginia Clark, Margaret Rouzer, Lucille Klingaman.

NOT IN PICTURE: Frances Knight, Ann Budd Patton, Mary Elizabeth Weedon, Emma Lake, Elizabeth Wenger, Billie Burke, Virginia Brand, Mary Margaret Lee, Joanna Adams, Mary Lou McCutcheon, Lillian Smith.

Glee Club

LILLIAN SMITH	<i>President</i>
MOLLY BENSON	<i>Vice-President</i>
MISS LYDA NEEBSON	<i>Director</i>

The Glee Club is one of the youngest and most active organizations here at college. Its chief aim is to take part in the contest of the Women's Glee Clubs of the State. Last year the Glee Club won the first prize in the contest at Charlottesville.

This year the entire Glee Club will go to Richmond on the last week-end in April to participate in the annual contest. Since there are representative glee clubs from most of the colleges in Virginia, the meeting promises to be most interesting. Each club is invited to sing several selections alone. In addition to this the entire company sings en masse.



FIRST ROW: June Bowie, Kathryn Shankweiler, Lucy Jo Davis, Mary Bussells, Page Howard, Miss Powell, Betty Schutz, Betty Zollmer, Elizabeth Wilson.
 SECOND ROW: Catherine Holland, Dorothy Gaillard, Elizabeth McNeer, Elizabeth Steele, Harriett Seem, Kathryn Little, Caroline Caldwell, Helen Ruppert, Catherine Zimmerman, Lilian Smith, Susie Harris, Theresa Worthington, Billie Burke, Martha Schomburg.
 THIRD ROW: Katharine Crockett, Elizabeth Scoggin, Mary Cookson, Lois Prescott, Rebecca Morrison, Elizabeth Terrell, Joyce Markille, Emily Timberlake, Kitty Drummond, Anne Thetford, Virginia Lewis House.
 FOURTH ROW: Margaret DeMund, Kathryn Miller, Frances Crafton, Euphemia Smith, Virginia Mahen, Gloria Jones, Gerda Quelch.
 NOT IN PICTURE: Anvella Prescott.

Cotillion Club

PAGE HOWARD *President*
 BETTY SCHUTZ *Secretary and Treasurer*
 MARY BUSSELLS *Chairman of Entertainment Committee*

The Cotillion Club, which is the only social club of Mary Baldwin, is composed of forty girls, outstanding in the social life of the college. The membership is selective, the girls being chosen for their social qualities, outstanding personality, scholastic ability, leadership, and college spirit. This club strives to keep a high standard of membership.

During the year an effort was made to contribute something to the social life of the school. A Fashion Show was given in the early fall in which only the members of the club took part. The show was in the form of a play, and the clothes were furnished by Palais Royal. The club also had the honor of selecting from its members those girls who acted as marshalls at all the social functions of the college.

Various forms of entertainment, both formal and informal, were planned by the club. During the year the club enjoyed a formal dinner and dance given at the Stonewall Jackson Hotel. The more informal entertainments consisted of a theatre party and a moonlight supper and swimming party.



FIRST ROW: Mildred Coleman, Alene Brewster, Dorothea Bettelle, Charlotte Taylor, Frances Thomas,
Margaret Grabill, Elizabeth Seegm, Julia Gooch
SECOND ROW: Margaret DeMund, Frances Crafton, Joanna Adams, Barbara Smith, Emily Jean Hughes,
Bessie Stollenwerck
NOT IN PICTURE: Camilla Dinham, Gloria Jones, Elizabeth Kuhn, Catharine Holland, Gladys Lyles,
Euphemia Smith, Emily Timberlake

Le Cercle Français

CHARLOTTE TAYLORPresident
BARBARA SMITHVice-President
GLORIA JONESSecretary
MARGARET GRABILLTreasurer

All students of advanced French are members of *Le Cercle Français*. The purpose of the organization is to help the students speak French more fluently and to increase their interest in foreign affairs.

Meetings are held twice each month. Every member of the club is given an opportunity to take part in the programs presented at these meetings. The programs this year have been quite varied and interesting. At the more formal meetings the literature, music, and history of France have been discussed. At other meetings plays have been presented, stories and anecdotes told, and interesting French games played.

The club presented a Christmas program in chapel on Friday, December 11th.

Through the club, members have acquired greater ease and fluency in speaking French, a knowledge of French life and customs, and a more vital interest in "le beau pays de France."



FIRST ROW: Betty Welles, Georgia Carson, Gertrude Messer, Marjorie Stuart, Kathryn Miller, Harriett Seem, Mary Buck.

STANDING: Marjorie King, Doris Coville, Nancy Lattick, Sara George Harris, Anne Davis Edgar, Margaret DeMund, Virginia House, Frances Crafton, Anne Thetford, Virginia Manson, Thelma Hulvey, Mary Lattick, Gertrude Hannah.

NOT IN PICTURE: Gloria Jones, Molly Benson, Betty Schütz, Elizabeth Scoggin, Camilla Dunham.

El Circulo Español

KATHRYN E. MILLERPresident
GLORIA JONESVice-President
GERTRUDE HANNAHSecretary-Treasurer

The students of the Spanish Department who received merit grades for the first quarter were invited to join El Circulo Español. The purpose of the club is to encourage, by its meetings, practice in Spanish conversation and to promote Spanish culture. The programs consist of Spanish songs, stories, and discussions of current events dealing with Spain and the Spanish-speaking countries.

The principle contribution which El Circulo Español made to the college during the past year was a lecture by Dr. James Bardin, which it sponsored. Dr. Bardin, the head of the Spanish Department at the University of Virginia, gave a well authenticated talk on Maya Civilization, a subject with which he is very familiar, having spent several years in research in the Maya country.



FIRST ROW: Page Howard, Kitty Shankweiler, Barbara Fisher, Elizabeth McNeer, Elizabeth Scoggin, SECOND ROW: Elizabeth Hurt, Mary Margaret Lee, Dorothy Hutchings, Josephine Hutcheson, Alice Brewster.

STANDING: Margaret King, Helton McAndrew, Frances Crafton, Sallie Ruhe, Betty Buel, Mary Lou McCutcheon, Jean Brecht, Frances Tabb, Harriett Seem, Margaret Grabill, Katharine Crockett.

NOT IN PICTURE: Susie Harris, Elizabeth Kuhn, Virginia Mahen, Anvella Prescott, Elizabeth Wilson, Lucy Jo Davis, Frances Woolford, Christine Armstrong, Charlotte Taylor, Martha Bell, Lillian Bell, June Bowic, Virginia Brand, Margaret DeMund, Emily Jean Higbee, Lillian Smith, Gloria Jones, Theresa Worthington.

Psychology Club

DOROTHY HUTCHINGS	<i>President</i>
JOSEPHINE HUTCHESON	<i>Vice-President</i>
GLORIA JONES	<i>Secretary-Treasurer</i>
DR. K. L. SMOKE.....	<i>Sponsor</i>

The aim of this club is to arouse and maintain an interest in all phases of mental life. This is done through the programs at the monthly meetings, at which times subjects of general interest are discussed sometimes supplementing the regular classroom work.

This year the club has made a study of some of the Psuedo-psychologies—Astrology, Phrenology, and Palmistry, and also certain phases of the abnormal. Whenever possible, outside speakers are procured, men prominent in their own fields.

The membership is composed of the students in Education, advanced Psychology, and those students of elementary Psychology who attain a certain scholastic standing.



FIRST ROW: Georgia Carson, Julia Gooch, Alene Brewster, Frances Crafton, Sara George Harris, Rosalie Brown, Margaret DeMund.

SECOND ROW: Virginia Brand, Doris Coville, Helen Waide, Agnes Latham, Elizabeth Moody, Jessie Bear, Lillian Bell, Nell Dudley, Margaret King.

THIRD ROW: Mary Buck, Charlotte Taylor, Thelma Hulvey, Jacqueline Phillips, Lillian Campbell, Kate Drake.

FOURTH ROW: Bessie Stollenwerck, Elizabeth Wilson, Marjorie Mower, Page Black, Marguerite Harper, Elizabeth Young, Frances Greer Brown.

NOT IN PICTURE: Kerlyn Baber, Catherine Baylor, Marie Brand, Helen Miller, Katherine Reid, Miriam Stubbs, Emily Timberlake, Lucy Irvine, Virginia Weaver, Louise Randol, Frances Lackey.

Day Student Club

FRANCES CRAFTON	<i>President</i>
ALENE BREWSTER	<i>Vice-President</i>
SARA GEORGE HARRIS.....	<i>Secretary</i>
JULIA GOOCH	<i>Treasurer</i>
MISS STRAUSS	<i>Sponsor</i>

The Day Student Club has as its chief aim the making of the day student an integral part of the college life and activities. In this goal, the club has succeeded unusually well, and it is impossible to find a single organization at Mary Baldwin in which there are not some enthusiastic members from this club. It has its place in the Student Government Association, being represented on the Student Council by its president.

The monthly meetings, both business and social, have served to make the members become better acquainted with one another, and the co-operation necessary in such an organization is always given whole-heartedly. The club has its own room in the college, where the business meetings and most of the social gatherings are held. This room is in use at all times by day students.

The largest social events of the year were the Faculty-Day Student Buffet Supper, and the tea for the graduates of the Staunton High Schools in the late spring, both of which were very successful.



First Row: Mary Blake, Esther Robins, Mary Margaret Lee, Charlotte Taylor, Jessie Bear
 Second Row: Amelia Cary Marshall, Dr. Greer, Mary Buck
 Third Row: Lillian Bell, Kitty Drummond, Molly Benson, Lillian Smith, Rosa Phipps

Granddaughters' Club

The members of the Granddaughters' Club have a position of particular honor in the life of Mary Baldwin College.

Their rich heritage of ideals and traditions which has been passed on to them from generation unto generation is zealously guarded by each girl whose honor it is to be a member of this club.

The mother of some, the grandmother of some, and both the mother and grandmother of still others, attended Mary Baldwin and helped build this school of which their granddaughters are so justly proud and to which it is their hope to add still greater honor.

The members of this club feel they are better fitted for the responsibility of this trust under the leadership of Dr. Elizabeth Juanita Greer. This is the first time in the history of this club that their counselor and adviser is herself a granddaughter, and it is with renewed courage they accept the challenge from the students "that they lead the way so others may follow."



FIRST ROW: Lillian Smith, Susie Harris, Frances Crafton, Elizabeth Wilson, Charlotte Taylor,
Frances Thomas, Lonise Martin
SECOND ROW: Page Howard, Christine Armstrong, Virginia Brand, Anne Thetford, Elizabeth Terrell,
Mary Larrick
THIRD ROW: Joanna Adams, Billie Burke
NOT IN PICTURE: Lois Prescott, Harriet Edmunds

The Little Sisters' Club

This organization is another of Mary Baldwin's traditions—an inheritance from the past. Girls are eligible for membership only if an older sister has been a student at Mary Baldwin.

Our sponsor, Miss Abbie McFarland, is a really-for-true member, because she was a "little sister" while at Mary Baldwin as a student.

These girls feel that they know Mary Baldwin just a bit better than the rest of the student body. In a good many cases, long before they were in high school, they knew all the secret feasting spots and had their room all selected.

Even with this fun in mind, there is a certain sacredness about the idea of being eligible as a little sister. Our sisters have been here before us, and now we come to take the place they have made for us.



A LOOK ON THE INSIDE.

The Mary Baldwin Honor Society

IN FEBRUARY 1932 the Faculty established a scholastic order to be known as The Mary Baldwin Honor Society. Election to this organization is regarded as a recognition of ability well employed.

Colleges exist primarily to foster academic excellence, and their degrees, scholarships, and other marks of distinction stimulate scholastic achievements. This Honor Society exists likewise to encourage excellence in scholarship.

By scholarship, we do not mean mere memorization of facts or theories by the student without a realization of the greater significance of the information she possesses. Instead, by scholarship we mean not only the search for and the acquisition of what others have called truth but also, after a careful consideration of its validity, the rejection of what we consider false and the assimilation into our lives of what we consider true. One's ideals of scholarship should be of such a nature that one may partake more wholesomely and more abundantly of life instead of immersing herself in cloistered seclusion and wasting her efforts in the contemplation of meaningless abstractions.

Thus, membership in The Mary Baldwin Honor Society is a challenge to the initiates. The member whom the Society desires, feels not so much pride in the recognition but responsibility to make a worth-while contribution to the common life.

The Society holds aloft the banner of scholarship, and to the students who have turned aside from the easier paths and by their talent and fidelity have proved themselves to be worthy, it gives the fitting recognition of a special distinction.

INITIATES FIRST SEMESTER, 1931-32

ALENE BREWSTER

RUTH SEE

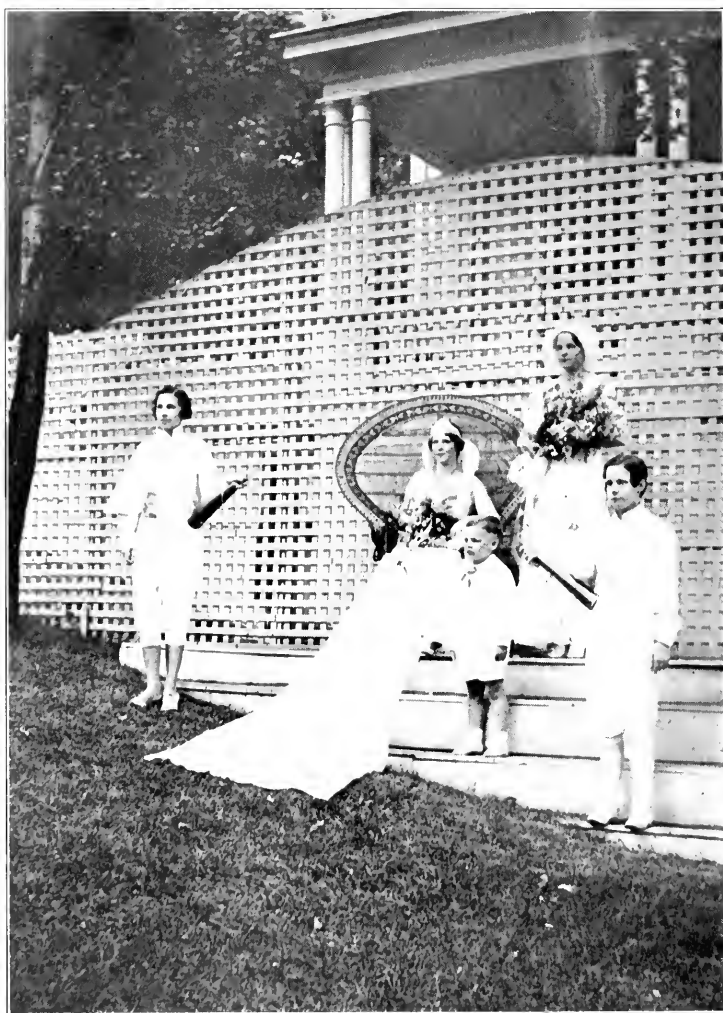
THERESA WORTHINGTON

“Alice had been looking over his shoulder with some curiosity. ‘What a funny watch!’ she remarked. ‘It tells the day of the month, and doesn’t tell what o’clock it is!’”

“Why should it?” muttered the Hatter. “Does your watch tell you what year it is?”

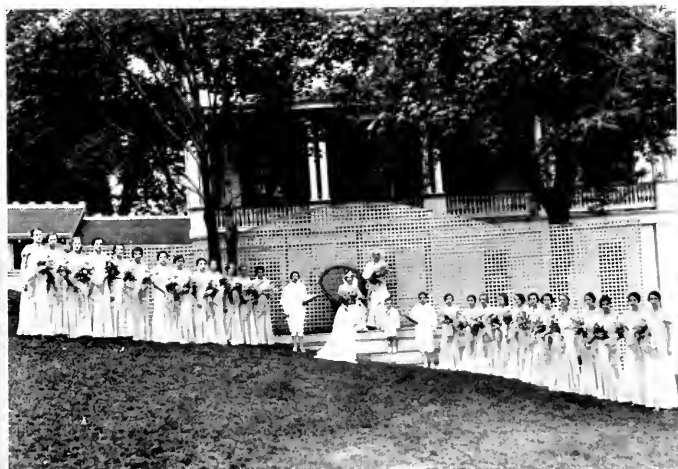


CALENDAR

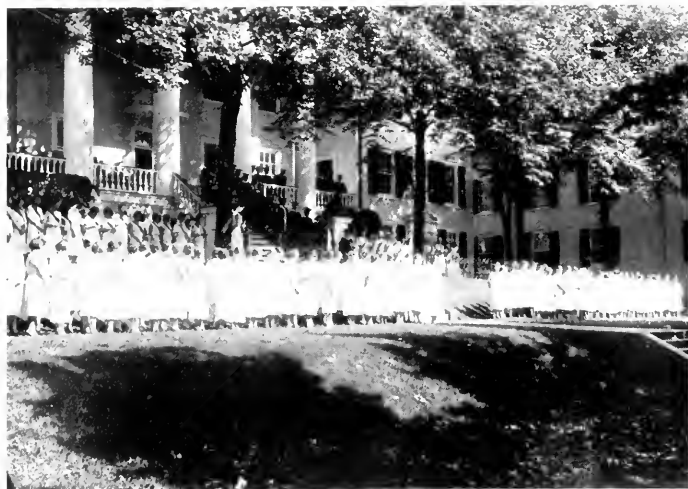


MAY QUEEN COURT, 1931

Queen: Elizabeth Smith. Maid of Honor: Helen Wilson. Pages: Billie Burke, Mildred Gilliam. Crown-bearer: John Daffin.



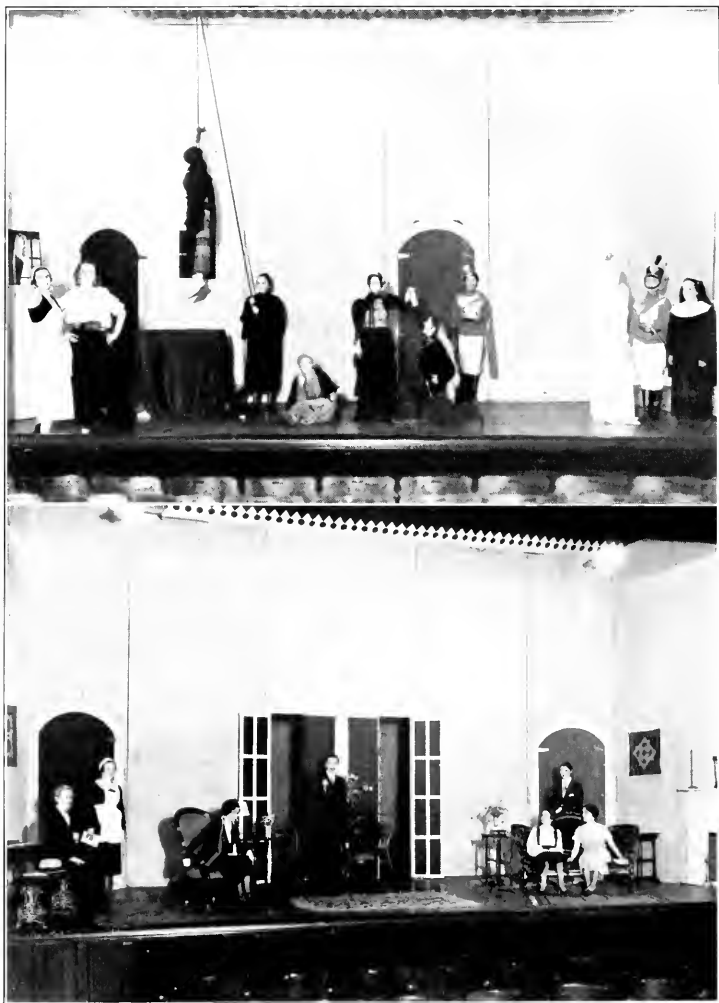
MAY DAY—1931
CLASS DAY—1931



SENIOR INVESTITURE SERVICE.
THE CRADLE SONG.



THE FASHION SHOW
THE SWAN



ILL FLOWS THE GORE
MR. PIM PASSES BY



*" 'The time has come,' the Walrus said,
 'To talk of many things.' "*



KATHERINE REID
May Queen, 1932

MARY CARLTON GAVIN
Maid of Honor, 1932



ANVILLA KATHARINE
PRESCOTT
Maid of Honor, 1932

**“How nice it would be if
only we could get through
into Looking-Glass House!
I’m sure it’s got—oh! such
beautiful things in it!”**



THE BEAUTY SECTION

as chosen by

McClelland Barclay



GERDA QUILCH



JOYCE MARKKITT



LILLIAN SMITH



CAROLINE CALDWELL



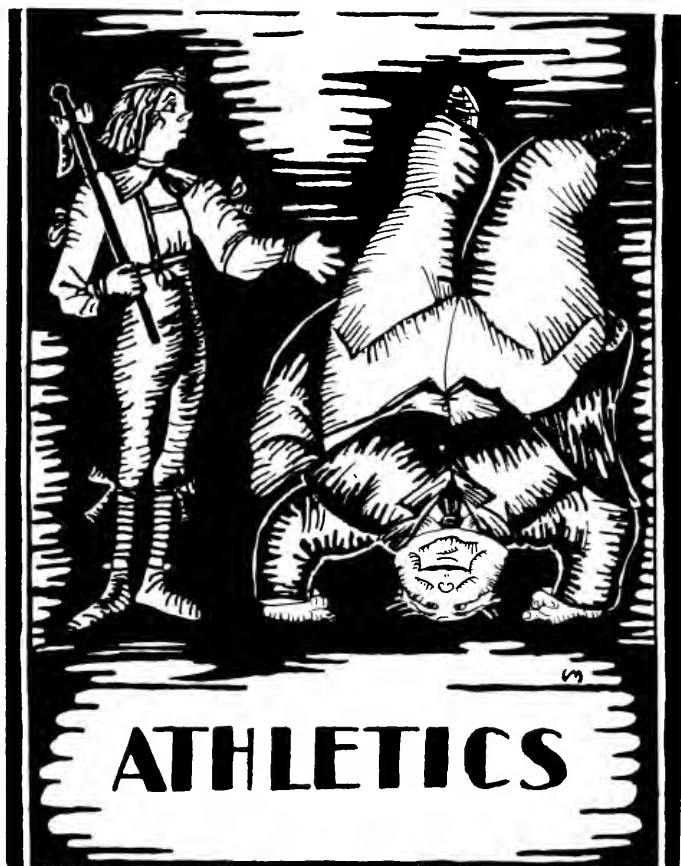
MARGARET DEMUND

"You are old Father William," the young man said,

"And your hair has become very white,
And yet you incessantly stand on your head,
Do you think, at your age it is right?"

"In my youth," Father William replied to his son,

"I feared it might injure the brain;
But, now that I'm perfectly sure I have none
Why, I do it again and again."





Hockey

The greatest interest ever manifested in hockey at Mary Baldwin was evident this past season. The weather was crisp and invigorating, and crowds of girls wended their merry way to the hockey field to cheer the teams to victory. Excitement was high as the Sophomores and Juniors appeared evenly matched, and when the day came for the show-down the sidelines were thronged with cheering enthusiasts. The game was truly thrilling, and when C. Zimmerman, the starring captain of the Sophomores, scored a goal at the beginning of the game and the plucky Juniors held them until the end scoreless, the essence of athletic spirit was shown by players and spectators alike.

The Senior-Sophomore game was another thriller, the final score being 2-1 in favor of the Sophomores. The Junior-Freshman game was marked especially by the brand new appearance of colorful regulation hockey tunics—and the score was 3-2 in favor of the Juniors.

The final game between the Freshmen and the Sophomores found the Sophomore team characterized by the white bandaged Woolford, the pugnacious Crinkley, and the impulsive Crowe. The score was in favor of the Sophomores, making them the champions for the year. There was a splendid spirit throughout the season in all the games and everyone enjoyed them.



Hockey

The all-star team, composed of the eleven girls who by virtue of their fine playing, sportsmanship, and distinctiveness on the field, is chosen by the Athletic Council, and is as follows:

CATHERINE ZIMMERMAN	<i>Right Wing</i>
MARTHA BELL	<i>Right Inside</i>
SUSIE HARRIS	<i>Center Forward</i>
FRANCES WOOLFORD	<i>Left Inside</i>
MARY CORNELL	<i>Left Wing</i>
JACQUELINE CRINKLEY	<i>Right Halfback</i>
ANNE HOLMAN	<i>Center Halfback</i>
KITTY REID	<i>Left Halfback</i>
AGNES LATHAM	<i>Right Fullback</i>
ELIZABETH HURT	<i>Left Fullback</i>
DOROTHY HUTCHINGS	<i>Goal</i>

A picked team composed of Harris, Bell, Wilson, Reid, Holman, Crinkley, Latham, Woolford, Ruhe, Hutchings and Cornell attended the second annual Virginia College Hockey Tournament at Harrisonburg. They reported the keenest type of interest in hockey technique and playing and teams from all over Virginia were there darting across the icy field in vari-colored tunics showing their skill at the classical game.



Basketball

Basketball season came and went with an interest displayed throughout it which quite equalled that shown over hockey. Cornell and Markillie were the talk of the campus and New York was regarded as the state for turning out sure fire feminine basketball amazons.

The practices were all held at the "Y" and were usually at night. At first the prospects for any good teams seemed poor, but the Freshmen came through and had a splendid team. The matchless combination of Markillie and Cornell, Welles and Spillman, and Hoy and Martin were only equalled by Woolford and Campbell, Crowe and Davis, and Benson and Crinkley of the Sophomores, who brought before the eyes and consciousness of the Mary Baldwinites the fact that basketball is a sport to be envied, admired, and acquired.

The Junior-Senior game was a bit reminiscent of the old song "The old gray mare she ain't what she used to be" since the score was 41-18 in favor of the Seniors and since both Juniors and Seniors had been severely trimmed by the Freshmen and the Sophomores in every game played by impossible scores such as 46-11 and 22-41. The game turned out to be a laugh from start to finish as Kitty Reid started taking her far-famed tumblers, followed by T. Worthington and Liz Wilson.

The Freshman-Sophomore game played the same night was exciting from start to finish. The walls of the "Y" rang with the cheering. The score at the beginning of the last quarter was 20-18 and finally ended with 26-24, the Sophomores winning by just one goal.



Basketball

The all-star basketball team chosen by the Athletic Council was as follows:

Forwards

SUSIE HARRIS

MARY CORNELL

Guards

FRANCES WOOLFORD

LILLIAN CAMPBELL

Center

GRACE CROWE

Side Center

CLAIRE DAVIS

The season was closed by a brilliant game in which the Faculty downed the Seniors. The faculty had had only one practice, but outclassed the Seniors, who were forced at the end of the game to acknowledge themselves defeated by the superior academic sextet with a score of 28-22.

The faculty team displayed such gallantry in playing that the blow was considerably lightened for the defeated Seniors. Many of the Faculty reported injuries and seemed to get around with more or less of an effort the next day, but the game was one of the bright spots of the year and was highly enjoyed by everyone, as was evidenced by the wild enthusiasm shown. It was hard to say who got the biggest kick out of it—the Faculty or the students.



Track

Out of the category of track emerges any number of sports which can be engaged in on an athletic field: hurdling, broad-jumping, high-jumping, baseball-throwing, shot-putting, javelin-throwing, sprinting, and relay racing are all among the events one enters under this heading.

Track comes at the same season with baseball at Mary Baldwin, and consequently one either participates in baseball or track, not both. Our facilities for track are not perfect, but the jumping pit has the required softness and the hurdles are indeed high enough to insure plenty of casualties during an especially exciting race.

Every year a Field Day is held some time early in May, and everyone participates in some branch of track. The baseball games are held first and the winning class is chosen by an elimination process of seven innings of good hard baseball. The obstacle race is the feature of the day, and every type of hindrance is set up to retard as much as possible progress in the race. The hurdling races are the prettiest sport engaged in, and prominent in them we find Mary Buck. The Field Day ends the athletic program, and is one of its outstanding events for the year.



Riding

In the eyes of some the most fascinating sport indulged in at Mary Baldwin is the ever popular one of riding. A system was evolved at the beginning of the year enabling any girl to ride a certain amount of time for a reduced rate, the number of rides being divided into two semester groups. Quite a large number of riding enthusiasts, led by the inimitable Bebe Hannah, our pride and joy of horsewomen, and Frances Woolford at the head of the organization, took advantage of this offer, and twice weekly Mr. Taylor gives us his horses to ride. The byways, woods, and paths around Staunton are perfect in every respect for riding and its keenest enjoyment. The gorgeous scenery of the Shenandoah Valley is enjoyed by the riders as they gallop, trot, pace, or singlefoot over the hills, in winter snow or spring. Charcoal, Bittersweet, Nemo, and Merry Widow are a few of the noble steeds our girls ride, and one of the later accomplishments of some of the braver souls is that of jumping. Our college also boasts some blue ribbon winners and prize winners in various riding shows around the country. We have the privilege of riding on the hunt course, famed in Virginia for its fine adaptability for the sport. The horses themselves are thoroughbreds, and worthy of all the pleasure they have given their riders from Mary Baldwin.



Minor Sports

To prove the versatility of the athletic department, a list of the minor sports should be given. They are natural dancing, tennis, archery, swimming, deck tennis, volleyball, walking, golf, and bowling.

Natural dancing is in its infancy at Mary Baldwin, but it has quite a following among the students. Miss Powell is an exponent of the highest type of art, and her philosophy of creative work is carried out by thirty or forty damsels clad in flowing multi-colored draperies, trying diligently to express their moods.

Tennis is encouraged spring and fall on our tennis courts, which are well cared for by the faithful Bill Crone. A tournament is sponsored annually, and the winners of singles and doubles are presented with trophies at the annual athletic banquet in the early part of May.

Archery has its faithful following, and "Jack" Crinkley and "Lib" Hurt are carbon copies of Robin Hood in ability. Sherwood Forest is transplanted to the back of Hill Top, and the twang of bow strings resounds often. An archery tournament is held each spring, and the winner of it is also presented with a trophy at the athletic banquet.

Swimming is always open to everyone and is enjoyed by many. In our microscopic pool on the hot days of spring, and even a few April fools in January and February we sought refuge, and plenty of glee is heard by everyone passing the pool at nearly any hour. The life-saving classes are well attended, and the tests successfully passed by a number of the girls, the majority of whom were Freshmen.



MINOR SPORTS



Minor Sports

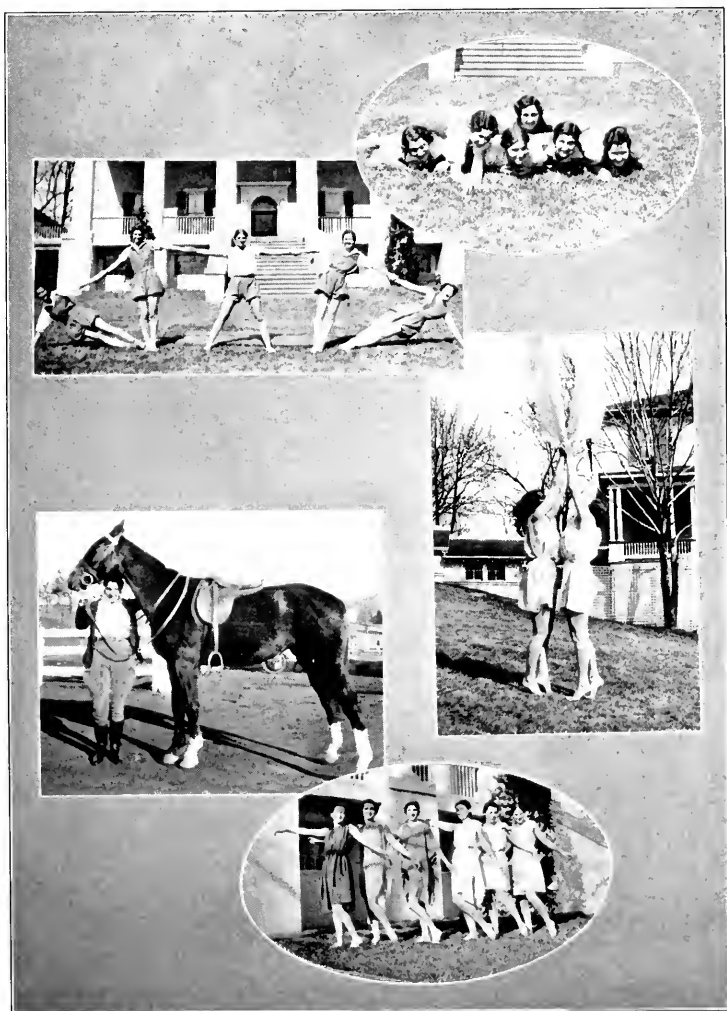
Deck tennis, although played in the gym instead of on some ocean liner, was a favorite during exams when exercise was vital to everyone's health. The gym is also the scene of volleyball and tumbling.

Walking, a pastime common to all, is greatly enjoyed since points are awarded toward the Monogram to the girls walking one hundred hours during the year. A walking card is provided on the Back Gallery, and to judge by the purposeful expressions on the faces of many walkers we feel sure the monograms will be numerous.

Golf has its following, and the Gypsy Hill Golf Club is the scene of many an eighteen-hole turf-raiser. The faculty also engages quite a lot in this game, but we hardly dare predict any expostulations as the ball flies from the clubs of Miss Hillhouse or Miss Powell.

Bowling seems to have been the favorite minor sport, judging by the number of enthusiasts. It was quite a regular thing to find a crowd of girls down at the Arcadia bowling alleys, and a tournament was sponsored by the Athletic Association. Points were given toward the monogram, and the tournament was won by Anne Budd Patton with a score of 101, while the highest average score was won by our Senior stalwart, D. C. Hutchings.

As the athletic program, consisting of most any sport you could mention, is carried out, each girl with any athletic urge is well taken care of and is given a chance to contribute something in her particular field or fields. A modern college to be well rounded must have a well-worked-out athletic program, and we feel that at Mary Baldwin this is well taken care of by the Athletic Council.



MINOR SPORTS

Athletic Council Activities

Picnic—The Athletic Council sponsors a very helpful program throughout the entire year. To start the year off right on the second Saturday a picnic is given at the Farm. This affords an excellent opportunity for both old and new girls to become better acquainted, since the big sisters take their little sisters. The afternoon and evening are spent in a most enjoyable way around the large camp fires and under the starlit sky. On returning from the picnic one has made a large number of new friends, and the whole atmosphere is one of happy, congenial companionship.

Health Day Program—The next big event that the Athletic Association sponsors is a Health Day program, in which everyone takes part with zeal and enthusiasm.

The day is begun by an original skit put on in chapel by the members of the Hygiene classes. This skit reveals many physical deformities and gives useful information on how such cases can be cured through a little effort and thought.

The program for the remainder of the day is emphasized by means of very clever health posters of all descriptions. These posters are placed in every conspicuous place on the campus. A prize is offered for the best poster. This year it was won by Mary Cornell and Evelyn Brown. These posters and girls appointed for the purpose, remind the students of their slumped shoulders, crane necks, lordosis curves, high-heeled shoes, etc., by means of pinning a little red tag on the victims, are very effective.

Prior to this day each organization elects one girl to represent that particular organization in a posture parade held in the chapel at 9:30 on the same evening. There are efficient judges who choose the girl with the best posture. To this girl is awarded a silver cup with her name engraved upon it. This cup was won by Caroline Caldwell for the year of '32.

Examination Week—The Athletic Association, recognizing the need for good, invigorating exercise, especially during examination week, outlines an athletic plan by which every individual can get the proper amount of physical exercise.

The harm of over-study and no recreation was demonstrated by a very skillful skit put on in chapel the opening morning of exams. After chapel each student was given a blotter with the word "Smile" on it.

Throughout the entire week a bowling tournament was held and prizes were offered for the highest individual single score and the highest total score. These prizes were won by Ann Budd Patton (single score), and Dorothy Hutchings (total score). Other sports emphasized were walking, swimming, deck tennis, and archery.

Fire Drills—The Athletic Association has charge of the working out and putting into effect of fire drills. These drills are held from the chapel, academic, dining room, and dormitories.

Horse Show—This event is one which causes much fun and excitement. It is usually held about two weeks after spring vacation at the Fair Ground.

Any student who has had any experience at all in riding, is eligible to take part. The main events are:

1. Beginners—Three-gaited class
2. Advanced—Three-gaited class
3. Five-gaited class—Open
4. Good horsemanship—Open
5. Jumping class—Open
6. Tournament

At the end of the show the Glenmore Hunt Club, of Staunton, stages a regular hunt around the Fair Ground.

Athletic Banquet—This banquet, held on May 6th, is the climax of the year's work of the Association. It is an occasion of great interest to everyone, for at this time all the athletic awards for the year are announced. Toasts are made to all the sports, the new Athletic Council is installed, and a talk given by Dr. Jarman. Awards are made to the members of the varsity hockey, basketball, baseball, and track teams. Cups are awarded to the class having the largest number of points and to the winners of the golf and tennis tournaments. All students who have made 650 points throughout the year are presented with college monograms. The most important award is the Mary Baldwin Seal Sweater, won by the girl chosen by popular vote as the best sport in school. The banquet is brought to a close by the singing of the Alma Mater.



FIRST ROW: Susie Harris, Katherine Reid, Elizabeth Hurt, Virginia Mabon

SECOND ROW: Jacqueline Crinkley, Caroline Caldwell, Mary C. Gavin

THIRD ROW: Helen Miller, Kathryn Little, Frances Woolford, Catherine Zimmerman, Elizabeth Wilson

Athletic Council

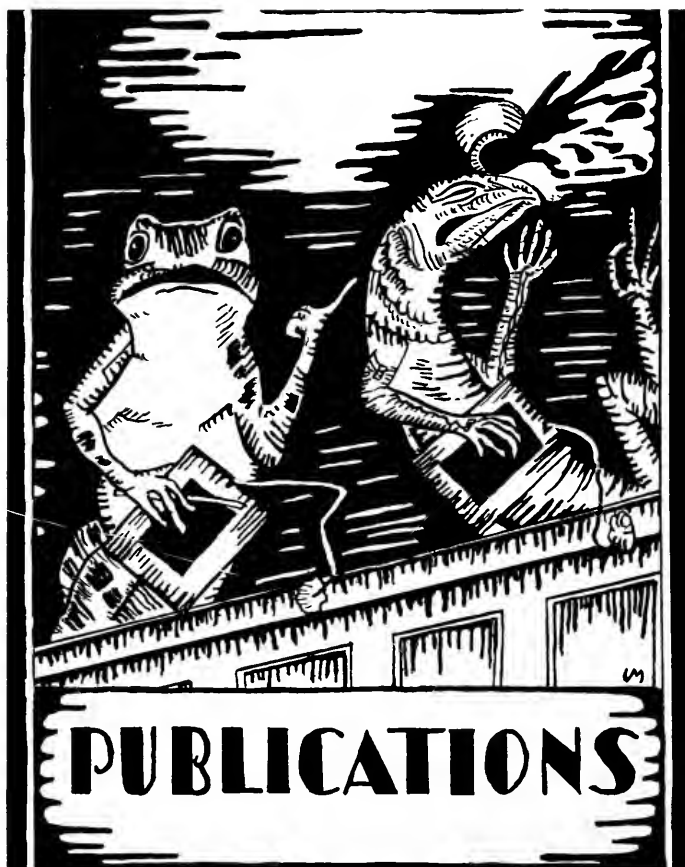
OFFICERS

SUSIE HARRIS	<i>President</i>
KATHERINE REID	<i>Vice-President</i>
ELIZABETH HURT	<i>Secretary</i>
VIRGINIA MABON	<i>Treasurer</i>

SPORT LEADERS

CATHERINE ZIMMERMAN	<i>Hockey</i>
ELIZABETH HURT	<i>Basketball</i>
ELIZABETH WILSON	<i>Track</i>
JACQUELINE CRINKLEY	<i>Walking</i>
CAROLINE CALDWELL	<i>Archery</i>
MARY CARLTON GAVIN	<i>Tennis</i>
HELEN MILLER	<i>Baseball</i>
VIRGINIA MABON	<i>Swimming</i>
KATHRYN MILLER	<i>Golf</i>
FRANCES WOOLFORD	<i>Riding</i>

"T h e Q u e e n furiously
threw an ink stand at the
Lizard. The unfortunate
little Bill had left off writ-
ing on his slate with one
finger as he found it made
no mark; but he now has-
tily began again, using the
ink, that was trickling
down his face, as long as it
lasted."





FIRST ROW: Kathryn Miller, *Editor-in-Chief*; Helen Miller, *Business Manager*; Emily Jean Higbee, *Assistant Editor*; Kathryn Little, *Sports Editor*.

SECOND ROW: Josephine Hutcheson, *Alumnae Editor*; Elizabeth Hurt, *News Editor*; Ruth Hopewell, *Assistant Business Manager*; Margaret Grabell, *Y. W. C. A. Editor*; Margaret DeMund, *Dej Student Editor*.

THIRD ROW: Mary Bell Archer, *Feature Writer*; Rosa Phipps, *News Editor*; Kitty Drummond, *Activities Editor*; Susan Hoge, *Sports Editor*.

Campus Comments

Campus Comments, the college bi-weekly newspaper, has now passed through seven years of its journalistic life. Growth has been a characteristic of the newspaper throughout its brief career. For the first three years of its life, *Campus Comments* was a small eight by eleven inch sheet which was filled in an informal style, and appeared fortnightly. The next year the paper became a weekly, but still of the same size. During its fifth year it began to outgrow its babyhood and to take on length. When *Campus Comments* was six years old its page was broadened by another column.

The *Campus Comments* of this year, although it is again being published only once every two weeks, has made its contribution to progress in that it has, in the majority of issues, acquired two additional pages. *Campus Comments* was given Honorable Mention by the Virginia Intercollegiate Press Association, of which it is a member, in the contest sponsored by that organization. Also this year the newspaper became, for the first time, a member of the National Scholastic Press Association.

So *Campus Comments* has grown and will, we hope, continue to grow in journalistic standards and achievements.



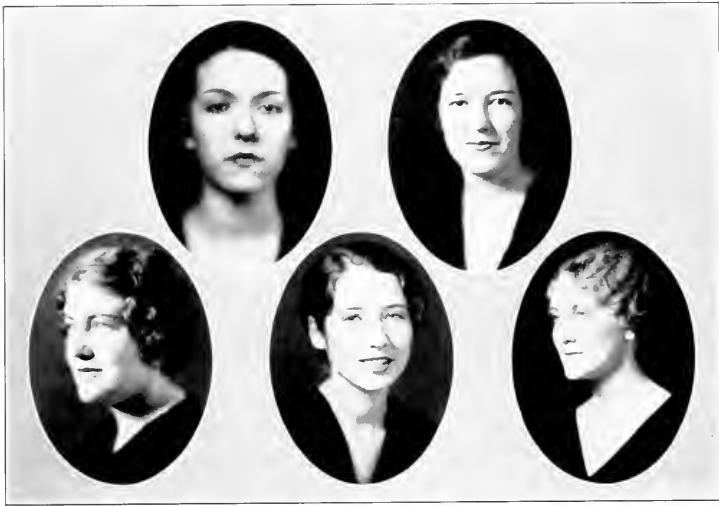
FIRST ROW: Elizabeth Scoggin, *Editor-in-Chief*; Barbara Smith, *Business Manager*; Janice Moyer, *Assistant Editor*; Julia Gooch, *Assistant Business Manager*
 SECOND ROW: *Associate Editors*; Elizabeth McNeer, Frances Robinson, Bessie Stollenwerck, Louise Eaches, Mary Cornell

Miscellany

The Mary Baldwin *Miscellany* represents the creative literary efforts of the student body. It seeks to uphold a standard for literary merit and to foster interest in the creation and appreciation of literature.

The college magazine holds an important place in the well rounded existence of a college woman. The thoughts and ideas of this generation find expression first in the school magazine, then approach the world in widening circles. The *Miscellany* is essentially a tool of training, a collection of first thoughts, first poems, first short stories, published to encourage young writers and young thinkers and to give those outside an idea of what the college student feels and thinks of life.

This year the *Miscellany* was published only twice during the school year and carried literary efforts in every field of interest. It strives to respond to the changing needs of the student body and to represent to them one form of college activity that never grows stale, that varies as much as personality and is as living as life itself.



FIRST ROW: Mary Bussells, *Editor-in-Chief*; Katharine Crockett, *Business Manager*
SECOND ROW: Elizabeth Buel, *Art Editor*; Amelia Cary Marshall, *Associate Editor*; Margaret DeMund,
Advertising Editor

The Bluestocking

The purpose of THE BLUESTOCKING, as of every annual, is that it serve as a memory book and that it form in the years to come a tie with the college and with old friends made there.

THE BLUESTOCKING is edited each year by the Junior Class and is presented as a last gift to the Seniors. The members of the staff are for the most part chosen from the Juniors, with representative members from the Sophomores and Freshmen.

Under the guidance of Miss Fannie Strauss the staff as a whole sets to work. To the Editors fall the choice and working out of a theme. The Art Editor and



FIRST ROW: Martha Bell, *Assistant Editor*; Gladys Lyles, *Assistant Editor*; Mary Bell Archer,
Freshman Representative
 SECOND ROW: Frances Woolford, *Assistant Business Manager*; Sallie Ruhe, *Athletic Editor*;
 Frances Robinson, *Assistant Art Editor*

The Bluestocking

her assistant, under the guidance of Miss Scruggs, carry out the artistic interpretation of the theme. To the Business Manager and her assistants falls the task of financing the publication of the annual. It is through the co-operation of these three divisions of the staff that the job as a whole is completed; each is essential to the producing of the annual.

In this number of THE BLUESTOCKING we have tried to present Mary Baldwin in all its aspects, and to present it in such a manner that in years to come, as these pages are turned, the old experiences and pleasures pictured here will be lived again. And we hope that it will afford pleasure to all its possessors.

Prizes For Bluestocking Work

PRIZE OFFERED BY PALAIS ROYAL

For Best Poem

Won by

ANVILLA PRESCOTT

(SENIOR POEM)

PRIZE OFFERED BY H. L. LANG AND CO.

For Best Kodak Picture

Won by

MARGARET GRABLI

(MAY QUEEN COURT)

PRIZE OFFERED BY THE THOMAS HOGSHEAD DRUG STORE, INC.

For Best Art Work

Won by

ELIZABETH BUEL

(CUT FOR CALENDAR)

PRIZE OFFERED BY BEVERLEY BOOK COMPANY

Awarded to

VIRGINIA MABEN

For Her Contribution to the Art Work in THE BLUESTOCKING

Meditation

Life seems an orchestra to me
That each of us may aid or mar.
We'll call the theme a "Tapestry";
Its blending notes, its song from far
May picture for us fields of grain,
The horn of plenty overflowed
With fruits of delta and of plain,
Where willing hands have plowed and sowed,
Each striving for the common good;
So that this "Tapestry" in song
Is made just as I should
Desire our life to be ere long
A thing of beauty, wrought by those
Who seek to help, to harmonize,
And with the simple part they chose
In life's orchestra, to blend
And aid the lovely fitting themes,
That all is beauty, melody
Singing with a wealth, it seems,
Of peace, good will, and pleasantry.

Yet if there are those who strive for self
In this, our orchestra,
Who differ from the theme, who help
In no way that can mar
Their own ambitions and desires;
If, fearing that they might be lost
Among the others, self inspires
To make them vary at the cost
Of others' hopes, ideals, and life,
From selfishness they improvise
Their own discordant strife,
Our music will not harmonize
No matter how we try to do
Our duty and assist the rest;
Yet still it seems we cannot woo
Back to the melody or quest
Those selfish ones whose cherished plans
Must carry them to other heights,
The flame of strife dissension fans,
So that our "Tapestry" must end in ruins.

Bits From "Alice In Wonderland"

AND how many hours a day did you do lessons?" said Alice.

"Ten hours the first day," said the Mock Turtle, "nine the next, and so on."

"What a curious plan!" exclaimed Alice.

"That's the reason they're called lessons," the Gryphon remarked; "because they lessen from day to day."

* * * * *

TRY another subtraction sum," said the Red Queen. "Take a bone from a dog; what remains?"

Alice considered. "The bone wouldn't remain, of course, if I took it—and the dog wouldn't remain; it would come to bite me—and I'm sure I shouldn't remain!"

"Then you think nothing would remain?" said the Red Queen.

"I think that's the answer."

"Wrong as usual," said the Red Queen; "the dog's temper would remain."

* * * * *

AREN'T you sometimes frightened at being planted out here, with nobody to take care of you?" said Alice, who was in the Garden of Live Flowers.

"There's the tree in the middle," said the Rose; "what else is it good for?"

"But what could it do, if any danger came?" Alice asked.

"It could bark," said the Rose.

"It says 'Bough-wough!'" cried a Daisy, "that's why its branches are called boughs!"

* * * * *

HOW is it you can all talk so nicely?" said Alice to the flowers in the Garden of Living Flowers. "I've been in many gardens before, but none of the flowers could talk."

"Then put your hand down and feel the ground," said the Tiger-lily. "Then you'll know why."

Alice did so. "It's very hard," she said, "but I don't see what that has to do with it."

"In most gardens," the Tiger-lily said, "they make the beds too soft—so that the flowers are always asleep!"

* * * * *

WHY do you say 'Feather' so often?" Alice asked at last, rather vexed. "I'm not a bird."

"You are," said the Sheep; "you're a little goose."

The Bluestocking

DEVELOPMENT is an inevitable process if the original seedling is healthy. Often the final offspring bears no resemblance to the original parent stem but it cannot deny its debt nor relationship.

The first issue of our year book in May, 1891, called *The Augusta Seminary Annual*, was edited by the English Literature classes. This book, bound in paper, contained no illustrations nor photographs, only literary articles. Copied from the editorial: "*The Seminary Annual* makes its debut with this number. We send it out into the world with some misgiving, for this is our first attempt and we lack the self-confidence necessary to make a successful paper. The want of a paper has been felt for sometime in the Seminary, but as it is an undertaking requiring much time and trouble, it has always been postponed until a more convenient season. Last year we got up a paper and had it read before the school. The girls encouraged us so much by their interest, that we resolved our next effort should, if possible, be printed, for if other Seminaries can publish papers, why shouldn't we?"

The 1892-1895 annuals bore the same name but contained pictures of the chapel, library, gymnasium, and art studio. The literary articles were not only in English, but in French and German as well.

In 1896 the book was called *The Annual of the Mary Baldwin Seminary*; this change was due to the change made in the name of the school. "The name of the Seminary has been changed, and it gives us great pleasure so to announce it to the world. Although the Augusta Female Seminary was known everywhere as "Miss Baldwin's School," yet we think it a very beautiful tribute to our beloved Principal that the popular name has been confirmed by the Trustees."

The 1899 annual was entitled *The Mary Baldwin Souvenir* and this was the first to have a stiff cover, regular photographs, drawings, and kodak pictures. In 1900 the name THE BLUESTOCKING was used but in 1901 *Baldwins* was the title. In 1902 the editors again used the name THE BLUESTOCKING and this name has been kept continuously.

Since 1925 THE BLUESTOCKING has been entered in the National Scholastic Press Association All-American Yearbook Contest each year. This association, which includes publications from hundreds of leading colleges and high schools, groups the entries in five classes according to their respective merit. Those placed in the highest honor groups receive the "All-American Rating" which designates them as annuals of especial distinction; the 1925, 1926, 1927, and 1928 editions of THE BLUESTOCKING received this rating. The next highest honor is the First Class Honor Rating and this was awarded to THE BLUESTOCKING of 1929, 1930, and 1931.

Twice *THE BLUESTOCKING* has been awarded the silver loving cup at the Virginia Intercollegiate Press Association meeting: 1928 and 1931. The inscription on the 1928 cup: "The J. P. Bell Trophy won by *THE BLUESTOCKING*. Best College Annual 1928. Class B" (annuals with less than 250 pages)

1931. "Virginia Intercollegiate Press Association Trophy. Best Class B Annual, presented by *Helianthus*. R. M. W. C. 1931."

EDITORS THROUGH THE YEARS

1891 Editor-in-Chief: Miss S. E. Wright; Associate Editors: S. R. Stribling, L. D. Hanger, E. E. Bear, M. L. Richmond; Business Managers: Mary Gny, Bette Coffey.

1892 Editor-in-Chief: Miss S. E. Wright; Associate Editors: Elizabeth McMillan, Gussie Bumgardner, Janie Brawner, Pattie Alexander; Business Managers: Mattie Wayt, Louise Poston, Bertha Hogshead.

1893 Editor-in-Chief: Miss S. E. Wright; Associate Editors: Sadie Anderson, Julia Aunsbaugh, Carrie Bell, Gussie Bumgardner, Mattie Wayt, Elizabeth Newman, Ruth See; Business Managers: Gussie Bumgardner, Kate May, Berta Macatee, Louise Street.

1894 Literary Director: Fandira Crocker; Editors: Margaret Lane, Maggie Belle Roller, Kate May, Mary White, Berta Macatee, Nettie McComb; Business Managers: Kate May, Margaret Lane.

1895 Editors: Hallie Ogle, Helen Winston, Bessie Brawner, Ruth Tredway, Pauline DuBose; Business Managers: Sally Lane, Anne Riddle.

1896 Katherine Yost, Alice Payton, Carrie Crawford, Abby McFarland, Nancy McFarland, Nettie DuBose.

1897—Edited by the English Literature Classes.

1898—Edited by the English Literature Classes.

1899 Editors: Martha Bruce, Kate Jones, Merrill Proctor, Rufie White, Anne Carr, Isabel Scott, Margaret Lynn Cochran, Eugenia Bumgardner, Olivia Barrow.

1900—Editor-in-Chief: Jessie Hawks; Literary Editors: Lucy Boyd, Florence Kalkhoff, Evelyn Macon, Betty Miller, Isabel Scott; Art Editor: Sharp Williams; Music Editors: Lillian Carr, Nina Ravenscroft; Business Editors: Winifred Adderton, Alice Kelly.

- 1901—Editor-in-Chief: Jessie Hawks; Literary Editors: Nora Fraser, Mabelle Pitkin, Rebecca Gilkeson; Art Editors: Bessie Hoge, Anniebelle Scott; Business Managers: Mary Harman, Mabel Leftwich.
- 1902—Editor-in-Chief: Margarettable; Literary Editors: Mary Lappes Robertson, Eleanor Morris, Lucy Parke Brooke; Business Editors: Celia Mason Timberlake, Mabel Leftwich; Art Editors: Bessie Hoge, Marie Brunson.
- 1903—Literary Editors: Lulu Wetherell, Esthine Paxton, Blanche Aldair, Marie Clarke Brunson, Cornelia Morgan, Eleanor White; Art Editors: Marie Clarke Brunson, Bessie Hoge.
- 1904—Literary Editors: Lola Kerr, Edna Kerr, Eychma Hupman, Elizabeth Sherrard, Cornelia Morgan, Hill Carter; Art Editors: Bessie Hoge, Hill Carter.
- 1905—Literary Editors: Edith Timberlake, Eychma Hupman, Susie Lee McElroy, Sallie Stout, Josephine Woods, Margaret May Weatherly; Art Editors: Louise Sloss, Florence Pealer.
- 1906—Literary Editors: Agnes McClung West, Muriel Fisher, Cornelia Switzer, Josephine Timberlake, Juana Creighton, Mary Donohoe; Art Editors: Kate Voltz, Annie Van Devanter.
- 1907—No publication.
- 1908—Literary Editors: Ruth Bradley, Elsa Heck, Katie Newton, Sue Dishman, Thalia Gillett, Marie Smith; Art Editors: Gertrude Garden, Katherine Street; Business Editors: Maggie Henderson, Mabel Shields.
- 1909—Editor-in-Chief: Lucie Lamb; Literary Editors: Margaret Terrell, Reba Andrews, Annie Bridgers, Lillian Harrison; Art Editors: Meine McLeod, Anne Henderson, Bessie Landes; Business Manager: Katie Newton.
- 1910—Editor-in-Chief: Katie Newton; Literary Editors: Emily Bridgers, Annie Preston Bridgers, Martha Stark, Kate Earle Terrell, Agnes Vance; Art Editors: Amelia Beard, Josephine Brown, Marguerite Sengel; Business Manager: Margaret Peale; Advertising Manager: Lalla Prufer.
- 1911—Editor-in-Chief: Kate Earle Terrell; Literary Editors: Sarah Ellen Green, Eleanor Teague, Josephine Mansfield, Agnes Vance, Martha Newton; Art Editors: Amelia Beard, Lucy Lync, Mervin Ray; Business Manager: Martha Stark; Advertising Manager: Lalla Prufer.

- 1912—Editor-in-Chief: Kate Earle Terrell; Literary Editors: Lydia Beck, Sarah Caldwell, Josephine Mansfield, Elizabeth McCue, Nannie Timberlake; Art Editors: Mary Gordon, Lucy Lyne, Mabel Odenbaugh; Business Manager: Fannie Strauss; Assistant Business Manager: Frances Moore.
- 1913—Editor-in-Chief: Lydia Beck; Literary Editors: Maude Gary, Georgia Hull, Agnes Wood, Vernon Lichder, Evelyn Morris, Josephine Steed; Art Editors: Pauline Anderson, Dorothy Deatherage, Harriet Smock; Business Managers: Virginia Switzer, Marzelle Hart.
- 1914—Editor-in-Chief: Agnes Woods; Literary Editors: Leona Allen, Antoinette Biggs, Lucie Bull, Margaret Hanna, Ida Smith, Lola Wise, Lillian Eisenberg; Art Editors: Pauline Anderson, Margaret Honston, Minnie Kate Buckelew; Business Manager: Todd Saffell.
- 1915—Editor-in-Chief: Ida Smith; Associate Editors: Agnes Slemmons, Virginia Switzer, Grace Lee, Margaret St. Clair, Ellen Scott, Pauline Livingston; Joke Editor: Katharine Terry; Art Editors: Mary Erwin, Helen Blackburn; Business Manager: Elizabeth Bottom.
- 1916—Editor-in-Chief: Elizabeth Bottom; Assistant Editor: Annie Cobb; Class Editor: Margaret St. Clair; Art Editor: Martha Sullenberger; Joke Editor: Ellen Scott; Club Editors: Hazel Swanson, Jane McIlhenny; Business Editor: Nell Baylor.
- 1917—Editor-in-Chief: Annie Cobb; Assistant Editor: Jewel Mears; Class Editor: Jane McIlhenny; Picture Editor: Mary Harding Buckner; Type Editor: Jane Kealhofer; Club Editor: Emily Burrow; Joke Editors: Fan Lee, Emma Dollavo; Art Editor: Esther Zeigler; Business Editor: Nell Baylor.
- 1918—No publication.
- 1919—No publication.
- 1920—Editor-in-Chief: Elizabeth Lerch; Associate Editors: Marjorie Cockrum, Mary Heyener, Isabelle McGowan, Kate Page, Dorothy Pettus; Art Editors: Lillian Floyd, Gay, Summers; Joke Editor: Helen Gaw; Business Manager: Katherine Bear; Advertising Manager: Reba Ruckman.
- 1921—Editor-in-Chief: Kate Page; Associate Editors: Mary Goodloe Billings, Marie Jordan, Catherine Wahlstrom, Honora Wood; Art Editors: Frances Capper, Virginia Sneed; Joke Editor: Elsie Jones; Business Manager: Hardenia Wyse; Assistant Business Manager: Elsie Palmer.

1922—Editor-in-Chief: Nancy Lee Hendon; Associate Editors: Mary Benham Mitchell, Katie Dale Mitchell, Laura Vaughan, Louise Hodges; Art Editors: Mary Elizabeth Seager, Margaret Skillman; Joke Editor: Elsie Jones; Business Manager: Lohita Crusier; Advertising Manager: Charlene Kiracofe.

1923—Editor-in-Chief: Laura Vaughan; Associate Editors: Mary Campbell Patterson, Grace Dunn, Nancy Lee Clark, Eleanor Brownfield, Frances Gotten; Art Editor: Lucy Page Coffman; Joke Editor: Elizabeth Warner; Business Manager: Mary Elisabeth Fisher; Advertising Editor: Martha Gayhart.

1924—Editor-in-Chief: Retta Coney; Assistant Editor: Helen Baylor; Literary Editor: Katie Dale Mitchell; Assistant Literary Editor: Elizabeth Roberts; Art Editor: Evelyn Orr; Assistant Art Editor: Elise Cornman; Class Editor: Kathryn Messmore; Club Editor: Maude Miller; Athletic Editor: Margaret Deans; Kodak Editor: Mary Campbell Patterson; Assistant Kodak Editor: Helen Morgan; Joke Editor: Elizabeth Warner; Assistant Joke Editor: Eleanor Eastman; Business Manager: Eleanor Brownfield; Advertising Editor: Dorothy Morriss.

1925—Editor-in-Chief: Margaret Scott; Assistant Editor: Katharine See; Literary Editors: Elizabeth Roberts, Martha Gayhart, Janie Roberts; Art Editor: Elizabeth Heimbach; Assistant Art Editor: Dorothy Exline; Class and Club Editor: Anna Harriet Shewmake; Athletic Editor: Virginia Bull; Joke Editor: Eleanor Eastman; Assistant Joke Editor: Mary McCollum; Kodak Editor: Margaret Ward; Business Manager: Nancy McNeel; Advertising Editor: Dorothy Curry.

1926—Editor-in-Chief: Dorothy Curry; Assistant Editor: Marguerite Dunton; Literary Editors: Katharine See, Elsie Rosenberger, Dorothy Morriss; Class and Club Editor: Mary Terrell; Art Editors: Elise Cornman, Janet Brand, Helen Wigginton; Kodak Editor: Elsie Gray Hume; Athletic Editor: Dorothy Exline; Joke Editor: Maurine Tully; Assistant Joke Editor: Florence Bantley; Business Manager: Marjorie Trotter; Advertising Manager: Dorothy Hisey.

1927—Editor-in-Chief: Dorothy Dyer; Literary Editor: Clara Berry; Feature Editor: Elise Gibson; Assistant Feature Editor: Margaret Patterson; Art Editors: Bena Price, Doris Brown, Katherine Walker; Joke Editor: Dorothy Miller; Assistant Joke Editor: Elizabeth T. Johnson; Athletic Editor: Elizabeth Hume; Kodak Editor: Henrietta Bedinger; Business Manager: Caroline Wood; Assistant Business Manager: Flora George; Advertising Editors: Frances Ruckman, Louise Jackson.

1928—Editor-in-Chief: Anna Catherine McMahon; Assistant Editor: Effie Anderson; Feature Editors: Nancy Cooper Johnson, Mary Garland Taylor; Kodak Editor: Elizabeth Miller; Joke Editors: Elizabeth Burns, Ruth Naff; Art Editors: Katherine Walker, Marie Macdonald, Corinne Perry; Athletic Editor: Grayson Baldwin; Business Manager: Jennie Hunt; Advertising Managers: Caroline Gochenour, Virginia Brooks.

1929 Editor-in-Chief: Rebecca Price; Assistant Editor: Elizabeth Muse; Feature Editors: Wilhelmina Eskridge, Elizabeth Hesser; Literary Editor: Agnes Junkin; Athletic Editor: Mamie Grant; Joke Editor: Mildred Bagley; Art Editor: Marie Macdonald; Sophomore Representative: Helen Wilson; Business Manager: Evelyn Baker; Assistant Business Manager: Elizabeth Woods; Advertising Managers: Bessie Lewis, Virginia Dickerson; Assistant Art Editors: Rhea Mildred Kincaid, Frances Toomer, Agnes McDonald.

1930 Editor-in-Chief: Elizabeth Fields; Assistant Editor: Agnes Junkin; Literary Editors: Ruth See, Laura Martin Jarman; Feature Editor: Anna Parker; Athletic Editor: Helen Wilson; Kodak Editor: Mary Bair Bowman; Art Editor: Agnes McDonald; Assistant Art Editors: Virginia Mahon, Rhea Mildred Kincaid; Business Manager: Salie Henrie Payne; Assistant Business Manager: Frances Baker; Advertising Managers: Betsy Ross, Nellie Werner.

1931—Editor-in-Chief: Anvella Prescott; Assistant Editor: Mary Margaret Lee; Associate Editors: Elizabeth Scoggin, Dale Barham, Harriett Seem; Kodak Editor: Helen Brown; Art Editor: Virginia Mahon; Associate Art Editor: Mary Strong; Business Manager: Dorothy Hutchings; Assistant Business Manager: Theresa Worthington; Advertising Manager: Frances Crafton.

Directory—Faculty

Mrs. Elva Bell Archer.....	Clarksdale, Miss.
Dr. Mary Swan Carroll.....	Morristown, Tenn.
Mr. John B. Daffin.....	Mary Baldwin College, Staunton, Va.
Mrs. Helen C. Eyster.....	61 S. Franklin St., Chambersburg, Pa.
Miss Mary Fishburne.....	1502 Hagwood Ave., Columbia, S. C.
Miss Clara J. Flansburgh.....	Dalton, Mass.
Mrs. Eleanor Parker Fox (Mrs. R. L. Fox).....	Fayette, Iowa
Dr. Jurnita Greer.....	584 Park Ave., Atlanta, Ga.
Miss Marguerite Hillhouse.....	205 Hampton Ave., Greenville, S. C.
President L. Wilson Jarrin.....	Mary Baldwin College, Staunton, Va.
Miss Clare King.....	1214 College St., Columbia, S. C.
Miss Mary E. Lakenan.....	Mary Baldwin College, Staunton, Va.
Mrs. Margaret Lang.....	R. F. D. 1, Lexington, Va.
Miss Abbie McFarland.....	Mary Baldwin College, Staunton, Va.
Miss Nancy McFarland.....	Mary Baldwin College, Staunton, Va.
Dr. F. Q. Martinez.....	Staunton, Va.
Miss Lyda Neebson.....	123 Essex Ave., Bloomfield, N. J.
Miss Mary Collins Powell.....	Tarboro, N. C.
Miss Elizabeth Pfohl.....	259 S. Church St., Winston Salem, N. C.
Dr. W. R. Schmidt.....	Mary Baldwin College, Staunton, Va.
Miss Elizabeth Scruggs.....	250 Marion St., Rock Hill, S. C.
Dr. Kenneth L. Smoke.....	1618 Navarre Road, Canton, Ohio
Mr. James T. Spillman.....	Mary Baldwin College, Staunton, Va.
Miss Martha Stackhouse.....	Dillon, S. C.
Miss Fannie Strauss.....	315 N. New St., Staunton, Va.
Dr. Mildred E. Taylor.....	614 W. California, Urbana, Ill.
Dr. E. P. Vandiver, Jr.....	312 N. McDuffie St., Anderson, S. C.

Directory—Students

Adams, Joanna Grove.....	Essex Road, R. F. D. 1, Randallstown, Md.
Anthony, Jean Scott.....	30 Prince St., Nanticoke, Pa.
Archer, Mary Bell.....	309 Cherokee Ave., Clarksdale, Miss.
Armstrong, Christiana McMullen.....Rogersville, Tenn.
Arthur, Helen Hope.....	218 S. Meridan St., Redkey, Ind.
Baber, Virginia Kerlyn.....	Route 5, Staunton, Va.
Baldwin, Betty	Bloomington, Wis.
Barnes, Anna Jane.....	N. Evans St., Pottstown, Pa.
Baylor, Catherine Neel.....	401 N. New St., Staunton, Va.
Bear, Jessie Sara.....	359 Sherwood Ave., Staunton, Va.
Bell, Martha Henderson.....	122 Crescent Ave., Louisville, Ky.
Bell, Lillian Henderson.....	44 Donaghe St., Staunton, Va.
Benson, Mary Eleanor.....	204 S. West Ave., El Dorado, Ark.
Bertelle, Dorothea Alberta.....Orangeburg, N. Y.
Black, Sarah Page.....	Stuarts Draft, Va.
Blake, Mary.....	Fairfax, Va.
Bowie, Charlotte Virginia.....	622 Washington St., Cumberland, Md.
Bowman, Leona.....Timberville, Va.
Bozarth, Flora.....	Williamsburg, Va.
Brand, Marie.....	630 Walnut Ave., Waynesboro, Va.
Brand, Virginia Albenia.....	417 N. Coalter, Staunton, Va.
Brehm, Hanna Jean.....	39 E. Kirmar Ave., Nanticoke, Pa.
Brewster, Alene Elizabeth.....	872 Selma Blvd., Staunton, Va.
Briola, Isabel Dorothy.....	1004 Mehrose Ave., Ambridge, Pa.
Brown, Evelyn Esther.....	100 Grove St., Tarrytown, N. Y.
Brown, Frances Greer.....	19 Frazier St., Staunton, Va.
Brown, Grace Rosalie.....	1010 Nelson St., Staunton, Va.
Buck, Mary Burwell.....	R. F. D. 3, Mt. Solon, Va.
Buel, Alice Elizabeth.....	2135 Chew St., Allentown, Pa.
Burke, Billie Taylor.....Mt. Airy, N. C.
Bush, Ellen Douglass.....	313 Sunset Dr., Greensboro, N. C.
Bussells, Mary Almira.....Fleeton, Va.
Caldwell, Caroline Elizabeth.....	1006 Westwood Ave., Richmond, Va.
Campbell, Lillian.....Churchville, Va.
Carson, Georgia Cathleen.....	R. F. D. 2, Staunton, Va.
Clark, Jean.....Crozet, Va.
Clark, Mary Virginia.....	803 Hickman Rd., Augusta, Ga.
Click, SarahElkin, N. C.
Coffee, Emolyn.....	3677 Hedrick St., Jacksonville, Fla.

Coleman, Mildred.....Pulaski, Va.
 Conlon, Caroline.....1238 S. 5th St., Terre Haute, Ind.
 Cookson, Mary.....R. F. D. 1, Leesburg, Ind.
 Cornell, Mary.....Pocantico Hills, N. Y.
 Cosby, Amine.....Painter, Va.
 Cottrell, Christine.....116 N. Madison St., Staunton, Va.
 Coville, Doris Louise.....213 E. Beverly St., Staunton, Va.
 Crafton, Frances Louise.....114 Fayette St., Staunton, Va.
 Crinkley, Jacqueline Epes.....302 High St., Blackstone, Va.
 Crockett, Katharine Cox.....Berryville, Va.
 Crowe, Grace Pilkington.....8 Windemere Place, St. Louis, Mo.
 Davis, Claire Faison.....Mount Olive, N. C.
 Davis, Lucy Jo.....703 N. Glasgow Dr., Dallas, Texas
 Davis, Virginia.....801 13th St., Ashland, Ky.
 De Mund, Margaret Louise.....Edgewood Apts., Staunton, Va.
 Drake, Katharine Elizabeth.....1212 Walnut St., Staunton, Va.
 Drummond, Kitty Lomax.....304 W. Hampton Ave., Spartanburg, S. C.
 Dudley, Nell Virginia.....R. F. D. 5, Staunton, Va.
 Dunham, Camilla.....Warm Springs Inn, Warm Springs, Va.
 Eaches, Louise.....23 Trebor Place, Wyomissing, Pa.
 Eckler, Bernice Evelyn.....906 24th St., Newport News, Va.
 Edgar, Anne Davis.....Marlinton, W. Va.
 Edmunds, Harriet.....1408 Virginia St., Charleston, W. Va.
 Edmunds, Ruth Putney.....1408 Virginia St., Charleston, W. Va.
 Elder, Nancy.....E. Beverly St., Staunton, Va.
 Faulkner, Mary Templin.....336 Desha Rd., Lexington, Ky.
 Fisher, Barbara Elizabeth.....Sutton, W. Va.
 Fitzgerald, Idolene Peacock.....Eastman, Ga.
 Fowler, Helen Blanche.....253 19th Ave., Columbus, Ohio
 Gaillard, Dorothy Helen.....120 E. 49th St., Savannah, Ga.
 Gardner, Lois Jane.....Blacksburg, Va.
 Gavin, Mary Carlton.....Kenansville, N. C.
 Gooch, Julia Davis.....20 N. Coalter, Staunton, Va.
 Goodman, Winifred.....405 Chesapeake Ave., Newport News, Va.
 Grabill, Margaret Ott.....211 N. Main St., Woodstock, Va.
 Gray, Martha Louise.....Elkmont, Ma.
 Hamlet, Elizabeth.....Phenix, Va.
 Hannah, Gertrude.....Fishburne Mil. School, Waynesboro, Va.
 Harper, Marguerite.....708 Selma Bly'd, Staunton, Va.
 Harris, Goldie Irene.....718 Elm St., Martins Ferry, Ohio
 Harris, Sara George.....Mint Spring, Va.

Harris, Susie Gee.....Victoria, Va.
 Harrison, Betty Keith.....Columbia St., East Falls Church, Va.
 Haynes, Matilda.....Lake Village, Ark.
 Higbee, Emily Jean.....1131 S. Pittsburgh St., Connellsville, Pa.
 Hoge, Susan Roche.....1512 West Ave., Richmond, Va.
 Holland, Anne Catherine.....3906 Potomac, Dallas, Texas
 Holman, Anne Miller.....Lee, Va.
 Holske, Winifred.....Pleasantville, N. Y.
 Hopewell, Ruth Eleanor.....101 High St., Strasburg, Va.
 House, Virginia Lewis.....111 Warren St., Wilson, N. C.
 Howard, Margaret Page.....812 N. Elm St., Greensboro, N. C.
 Hoy, Beverley Charlotte.....251 South Jefferson St., Petersburg, Va.
 Hulvey, Theima.....112 Lake Ave., Staunton, Va.
 Hurt, Elizabeth Montgomery.....Wytheville, Va.
 Hutcheson, Josephine Elizabeth.....Edinburg, Va.
 Hutchings, Dorothy Compton.....State Hospital, Utica, N. Y.
 Irvine, Lucy Rodes.....Route 2, Waynesboro, Va.
 Jones, Gloria Helen.....2101 Conn. Ave., Washington, D. C.
 Keane, Mildred Elizabeth.....10 Telegraph St., Binghamton, N. Y.
 King, Margaret Naomi.....156 N. Coalter, Staunton, Va.
 Klingaman, Lucille.....308 Main St., Etnaus, Pa.
 Knight, Elizabeth Frances.....315 Chesapeake, Newport News, Va.
 Kuhn, Martha Elizabeth.....3227 W. Grace St., Richmond, Va.
 Lackey, Frances Stratton.....115 Oakenwold St., Staunton, Va.
 Lake, Emma.....11 Palisades Rd., Atlanta, Ga.
 Larrick, Mary Cornelia.....448 Eliza St., New Martinsville, W. Va.
 Larrick, Nancy Belle.....448 Eliza St., New Martinsville, W. Va.
 Latham, Agnes Adams.....Box 248, Staunton, Va.
 Lee, Mary Margaret.....Ronceverte, W. Va.
 Little, Kathryn Bacon.....2636 Calvert St., Baltimore, Md.
 Logan, Martha.....13th & Breed Sts., South Side, Pittsburgh, Pa.
 Louderback, Elizabeth Eleanor.....Stanley, Va.
 Love, Winifred.....Moorefield, W. Va.
 Lumsford, Margaret Elizabeth.....Monterey, Va.
 Lyles, Gladys Fleming.....129 Mills Ave., Spartanburg, S. C.
 McAndrew, Florence Helton.....Chadron, Neb.
 McCaleb, Olive Hilliard.....218 Fudge St., Covington, Va.
 McCutcheon, Mary Lou.....R. F. D. 1, Goshen, Va.
 McDonald, Emily Louise.....407 Church Ave., S. W., Roanoke, Va.
 McNair, Mrs. Elsie.....Woodward Apts., Staunton, Va.
 McNeer, Elizabeth Hunter.....530 10th Ave., Huntington, W. Va.

Maben, Virginia Bennett.....Blackstone, Va.
 Manson, Virginia Crawley.....4200 Seminary Ave., Richmond, Va.
 Markillie, Joyce Eleanor.....111 Broadway, New York City
 Marshall, Amelia Cary.....757 Middlebrook Ave., Staunton, Va.
 Martin, Louise.....White Post, Va.
 Martin, Marian Pearl.....White Post, Va.
 Mawhinney, Mildred Harris.....Naxera, Gloucester Co., Va.
 Merriam, Barbara.....Sun, W. Va.
 Messer, Gertrude.....Galax, Va.
 Milam, Rosannah.....310 West Main St., Cartersville, Ga.
 Miller, Helen.....New Hope, Va.
 Miller, Kathryn Eva.....135 Court St., Covington, Va.
 Montgomery, Elizabeth.....606 E. Montgomery Ave., Rockville, Md.
 Moody, Elizabeth Fulton.....231 Sycamore St., Staunton, Va.
 Morrison, Rebecca Jane.....1107 Pecan Ave., Hopewell, Va.
 Morrow, Mildred Mary.....210 West St., Wilksburg, Pa.
 Mower, Marjorie....."Frankholme," Staunton, Va.
 Moyer, Janice Hartzell.....37 N. West St., Allentown, Pa.
 Patterson, Helen Graham.....478 N. Washington St., El Dorado, Ark.
 Patton, Anne Budd.....212 Westover Ave., Ghent, Roanoke, Va.
 Perkins, Jacqueline.....Blackstone, Va.
 Peters, Susie.....150 Oakhurst Ave., Bluefield, W. Va.
 Phillips, Jacqueline Virginia.....Woodward Apts., Staunton, Va.
 Phipps, Rosa Gilmer.....735 Wayne Ave., Waynesboro, Va.
 Pointer, Virginia Merle.....20 Park Ave. Blvd., Newport News, Va.
 Prescott, Anyilla Katharine.....28 Chestnut St., Garden City, N. Y.
 Prescott, Lois.....28 Chestnut St., Garden City, N. Y.
 Quelch, Gerda Louise.....Forest Hills, Wilmington, N. C.
 Randol, Margaret Louise.....21 N. New St., Staunton, Va.
 Reid, Katherine Lonsdale.....214 Fayette St., Staunton, Va.
 Richtmyre, Genevieve.....3 Grant Ave., East Orange, N. J.
 Rives, Caroline Fairfax.....1682 Monticello Ave., Petersburg, Va.
 Robertson, Anne Felder.....2628 Henry St., Augusta, Ga.
 Robins, Esther Lyttleton.....Snow Hill, Md.
 Robinson, Frances Lorene.....2404 Kings Way, Augusta, Ga.
 Rouzer, Margaret.....727 S. Fulton St., Salisbury, N. C.
 Rudd, Anne Randolph.....Bon Air, Va.
 Ruhe, Sara Louise.....518 N. 6th St., Allentown, Pa.
 Ruppert, Helen.....3 Woodside Park, Pleasant Ridge, Mich.
 Schomberg, Martha.....1013 Second Ave., Columbus, Ga.
 Schutz, Elizabeth.....Ambassador Apts., 39th and Canterbury Rd., Baltimore, Md.

Scoggin, Elizabeth Blanche.....Drakes Branch, Va.
 Scott, Mary Adeline.....Staunton, Va.
 See, Ruth.....Floyd, Va.
 Seibert, Harriet Ann.....Rt. 2, Martinsburg, W. Va.
 Seem, Harriett.....Walnut St., Bath, Pa.
 Shankweiler, Kathryn Kline.....28 S. 10th St., Allentown, Pa.
 Simmons, Martha Ashlawn.....E. Baker, St., Tarboro, N. C.
 Smith, Barbara Dingley.....90 Morningside Dr., New York City
 Smith, Euphemia.....55 Laurel St., Salt Lake City, Utah
 Smith, Lillian Horton.....30 South St., Ridgway, Pa.
 Spillman, Isabella Oldham.....515 W. Burke St., Martinsburg, W. Va.
 Steele, Elizabeth.....405 Fayetteville Rd., Rockingham, N. C.
 Stollenwerck, Bessie Baker.....221 E. Beverly St., Staunton, Va.
 Stuart, Marjorie.....308 N. Wayne Ave., Wayne, Pa.
 Stubbs, Miriam Claire.....Green Cove Springs, Fla.
 Tabb, Frances Kathleen.....N. Mildred St., Charles Town, W. Va.
 Taylor, Charlotte Alexander.....8 Oakenwold Terrace, Staunton, Va.
 Terrell, Elizabeth Bell.....223 W. Agarita, San Antonio, Texas
 Thetford, Anne Dimmick.....15 Cloverdale Park, Montgomery, Ala.
 Thomas, Lillian Frances.....R. F. D. 1, Ivy Depot, Va.
 Timberlake, Emily Kent.....Ridgewood Rd., Staunton, Va.
 Waide, Helen Inez.....717 Selma Bly'd, Staunton, Va.
 Wall, Mrs. Elizabeth.....716 Selma Bly'd, Staunton, Va.
 Watson, Beatrice Vivian.....McClellan Heights, York, Pa.
 Wead, Harriet Donaldson.....119 Christiana St., N. Tonawanda, N. Y.
 Weaver, Virginia Malinda.....918 Nelson St., Staunton, Va.
 Weeden, Mary.....301 Gates St., Huntsville, Ala.
 Welles, Betty.....Wyadusing, Pa.
 Welton, Page Nelson.....Moorefield, W. Va.
 Wenger, Elizabeth Mary.....Waynesboro, Va.
 West, Mary Josephine.....Uvalde, Texas
 Wilson, Elizabeth Brownlee.....Box 687, Staunton, Va.
 Wood, Evelyn Alice.....Campbellsville, Ky.
 Woolford, Frances Tremere.....1609 Ponce de Leon Ave., Atlanta, Ga.
 Worthington, Theresa McCormack.....Bel Air, Md.
 Young, Elizabeth Newton.....Route 1, Churchville, Va.
 Young, Mary Graeme.....1100 Leighton Ave., Anniston, Ala.
 Zimmerman, Catherine.....2400 Lakeview Ave., Richmond, Va.
 Zollinger, Betty.....225 19th St., N. W., Canton, Ohio

AFTERWORD



Four years have passed, as Alice lived
Her day dream long ago.
And she must rub her eyes and wake.
(Yet dreams can still be true.)

And tho' she's grown a little tall,
And bigger than she knew,
She'll often sit and dream again,
And know her dream was true.



ON CHOOSING A COLLEGE

Are you going to college?

Do you belong to the present generation?

The answer to the preceding interrogations is perforce the same

Today the question is not—Are you going to college? but—Which college have you chosen?

Choose your college with care. Be sure she will provide for you four years of happiness and intellectual satisfaction.

Read her catalogue, look at her view book, but study her year book. Nowhere else will you see mirrored as distinctly her living personality.

There you will meet face to face the students who call themselves by her name.

Mary Baldwin College is particularly happy in being introduced to you by her year book, *THE BLUESTOCKING*.

MARY BALDWIN COLLEGE

*The College with a Background of Culture and Scholarship.
Educationally Efficient, Socially Selective, Spiritually Sincere.*

STAUNTON :: :: :: :: VIRGINIA

WOODWARD AND LOTHROP

10th, 14th, F and G Streets
WASHINGTON

*Here—Smart Youth
Receives
Specialized Attention*

ON OUR THIRD AND FOURTH FLOORS
YOU MAY SELECT

SMART DRESSES
COATS AND ACCESSORIES

FOR CLASSES, SPORTS, STREET WEAR,
AND SOCIAL AFFAIRS

COMPLIMENTS

OF

LOVETT SHOE COMPANY

"Snappy Footwear"



For 50 Years We Have Been
PRINTING PROGRAMS
AND CIRCULARS FOR
Schools of Staunton
Call US up!

JULIUS J. PRUFER

Successor to Stonebarnes & Pruffer
Printers Since 1882

25 N. Augusta Street, Staunton, Va.

Gas The Master Fuel

If it is Done with Heat You Can

DO IT BETTER WITH GAS
CONSULT

Your Local Gas Company

FARLEY'S

Cleaning, Pressing, and Dyeing

16 South New Street
Staunton, Virginia

TRY OUR PARCEL POST SERVICE

RETURN POSTAGE PREPAID

LADIES' WORK GIVEN

SPECIAL ATTENTION

PHONE

2 4 6

MODERN MODES FOR MODERN MAIDENS

SMART FASHIONS

Enhancing the Charm of Any Wearer—is Always a Feature of Every

“Palais Royal” Garment

A Brilliant Succession of
Costumes for Every
Occasion

WE CATER TO THE WHIMS OF THE COLLEGE GIRL



9 East Beverley

::

::

::

Staunton, Virginia

Play Safe And Be Satisfied

The garments you value are worth insurance against *incorrect methods of cleaning*. THE NATIONAL ASSOCIATION OF DYERS AND CLEANERS, together with the Federal Trade Commission, has set certain standards of quality and handling that protect you—the customer.

These methods have been whole-heartedly endorsed by WOODWARD'S, and every rule is a standard practice in OUR plant. We believe they reflect a desire to meet the RESPONSIBILITY you EXPECT of your cleaner. Your problems are OUR problems.

Insist that your garments are handled the
W O O D W A R D W A Y !

Woodward's

MASTER CLEANERS AND DYERS

Cleaning & Dyeing Works, Inc.

10 S. Market Street :: :: Staunton, Virginia

Phone 929

W E C A L L ——— A N D ——— D E L I V E R

**PUGH-BLAKEMORE-STRICKLEN
Company**

Staunton's Most Complete Department Store

THE HOME OF
HUMMING BIRD
Full Fashion Pure Thread Silk
HOSE

MYERS FABRIC and FRENCH KID
GLOVES

MATTHEWS AND FAUVER

HABERDASHERS
MCGREGOR SPORTSWEAR
"Always There in Men's Wear"

STAUNTON
VIRGINIA

DR. HUME SPRINKEL
DENTIST

COMPLIMENTS
OF
THE
ARCADIA

M. KIVLEGHAN

E. L. HOLL C. L. HOLL E. L. WILZ

WHITE STAR MILLS

MANUFACTURERS
OF
HIGH GRADE FLOUR

ASK YOUR
GROCER
FOR

Metrose Patent
White Star Patent
New Process Straight

BRANDS
MANUFACTURED
SOLELY
BY

WHITE STAR MILLS
STAUNTON, VIRGINIA

M. B. C.
HEADQUARTERS

O — O

We . . . Welcome . . . You

O — O

Everything
Sold in a First
Class Drug Store

O — O

KENNEDY AND ELLINGER
Prescription Druggists

STAUNTON MILITARY ACADEMY

A Military Preparatory School that Really Prepares a Boy, not only to Enter College, but with Training that Equips him to Stay There!

Consult Report Southern Association Colleges and Secondary Schools

(COPIES IN HANDS OF PUBLIC SCHOOL SUPERINTENDENTS)

NOTE COLLEGE SUCCESS OF STAUNTON GRADUATES!

Examine Reports for Several Years and Observe Our Leadership Among Preparatory Schools that are Essentially Military

236 Graduates Now Doing Successful
Work at 33 Colleges and Universities

Since March 1, 1931, the Staunton Military Academy has been an Examination Center for the College Entrance Board.

These Examinations will be held around June 15th to 20th, each year.

STATEMENT OF CONDITION OF STAUNTON NATIONAL BANK AND TRUST COMPANY STAUNTON, VIRGINIA

Condensed from Report to Comptroller of the Currency

at Close of Business, December 31, 1931

RESOURCES

Loans and Discounts	\$988,583.61
Overdrafts	136.19
Bonds, Securities, etc.	52,682.18
U. S. Bonds for Circulation	81,000.00
Real Estate, Furniture and Fixtures	33,838.58
Treasurer U. S. 5½% R. Fund	4,050.00
Cash on hand	830,730.64
Due from Banks	47,900.35
Other Assets	736.33
	\$939,778.88

LIABILITIES

Capital Stock	\$100,000.00
Surplus and Profits	71,720.96
Dividends Payable Jan. 2, 1932	4,000.00
Circulating Notes	81,000.00
R. Discounts	114,514.29
Deposits	
Individuals	\$511,992.25
Banks	347,966.13
Other Liabilities	736.33
	\$939,778.88

3% INTEREST PAID IN OUR
CHRISTMAS SAVING CLUB



M. E. C.
Souvenirs Pennants
Greeting Cards
Fountain
Pens

LEATHER GOODS IMPORTED GIFTS

CLASS A

There's nothing that can get ahead of Class A that's the very front of everything. Mary Baldwin is progressing wonderfully as a Class A Woman's College. Anything that we can do to make this a successful session, we will be delighted to do. Among the restaurants, we hope to win an A1 rating. If pure tools, expert chefs, pleasant surroundings, and fair charges can accomplish this end, we'll make the grade.

CHRIS' RESTAURANT

Six South New Street Staunton, Virginia



D-R-I-N-K

Coca-Cola

I-N B-O-T-T-L-E-S

It had to be GOOD to Get Where it is!

Staunton Coca-Cola Bottling Works, Inc.

Phone 304

ACADEMIC CLOTHING

CAPS, GOWNS AND HOODS
FOR RENT OR SALE

ILLUSTRATED FOLDER
Sample and Prices Sent on Request

—

UNIFORMS

FOR

COLLEGE BANDS and ORCHESTRAS
Write for Our Free Catalog

—

The C. E. WARD CO.

Incorporated 1905

NEW LONDON, OHIO

FRATERNITY, COLLEGE and CLASS

Jewelry

Commencement Announcements
and Invitations

—

*Jewelers to the Senior Class
and the Cotillion Club of
Mary Baldwin
College*

—

L. G. BALFOUR COMPANY

MANUFACTURING
JEWELERS AND STATIONERS

Attleboro :: :: Massachusetts

Timberlake Dry Goods Co.

PHONE

2 1 1

—*Staunton's Greatest Store*—

T. C. BARBER AND R. L. SOUDER, OWNERS

Millinery

Ready-to-Wear

Jack Tar Togs for Children

Hosiery Gloves Novelties

O— O

SILK UNDERWEAR

DRY GOODS

SILKS

HOGE AND MCCHESENEY

ATLAS INSURANCE AGENCY

F---I---R---E

INSURANCE

SURETY BONDS

FURNISHED

OFFICE

CITY HALL

Staunton :: Virginia

Open 7:00 A. M.—to— 8:00 P. M.

OPPOSITE
NEW THEATRE

WOODBRIAR
COFFEE SHOPPE

PHONE

8 2 7

Staunton :: :: Virginia

Miss M. M. Riley

PROPRIETOR

M. B. C. DRUG STORE

Whitman's——Russell McPhails——Martha Washington

CANDIES

Eastman Kodak Films——Expert Soda Service

Thomas Hogshead, Inc.

THE
CORNER
DRUG STORE

A . . Good . . Place . . To . . Trade

SHOES

*Always the First with
the Latest out
in Shoes*

Sizes AAA to EEEE, 2½ to 10

HOSIERY

*Our Hosiery Must Not Run,
If so, You Get a New Pair*

EXCLUSIVE
AGENTS
FOR

LADY ENDICOTT

EVERY PAIR GUARANTEED
AND YOU ARE THE JUDGE

MERIT
SHOE
CO.

Fifteen East Beverley Street
Staunton :: :: Virginia

AUGUSTA FRUIT AND
PRODUCE COMPANY

INCORPORATED

FRESH
FRUITS AND
VEGETABLES

0—0—0

FULL LINE

OF

C—A—N—D—Y—E—S

0—0—0

Phone 371

Opposite C. & O. Depot
Staunton :: :: Virginia

The National Valley Bank

of STAUNTON, VIRGINIA

RESOURCES MORE THAN THREE MILLION

Augusta County's Oldest, Largest and Strongest Bank

DESIGNATED BY FEDERAL RESERVE BOARD
TO ACT AS EXECUTOR, TRUSTEE, ETC.

O — — — O

Wm. A. Pratt, *President*

Chas. S. Hunter, *Vice-President, Cashier*

W. B. Miller, *Assistant Cashier* Gilpin Wilson, *Vice-President*

Floridus Crosby, *Trust Officer*

O — — — O

MASSIVE SAFE DEPOSIT VAULT
Capacity 3200 Safe Deposit Boxes

“Simply Service”

There is a Reason—

FOR THE WHITENESS OF OUR

—Laundry Work

Phone 195

Staunton Steam Laundry

Staunton :: Virginia

BEVERLY BOOK CO., INC.

BOOKS
STATIONERY
MEMORY BOOKS

Kodak Albums—Victrolas, Records

MASONIC TEMPLE
STAUNTON :: :: VIRGINIA

HARRY WALTERS

INCORPORATED

O—O

WHERE THE WOMAN WHO
KNOWS BUYS HER CLOTHES

O—O

LADIES'
READY-TO-WEAR
AND
MILLINERY

O—O

13 East Beverley Street
Staunton :: Virginia

HAMRICK AND COMPANY

—FLORISTS—

O—O

Phone 701
18 W. Frederick St
Staunton :: Virginia

O—O

We Telegraph Flowers Anywhere

SPOUL AND CROWLE

O—O

INSURANCE
AND
FIDELITY BONDS

O—O

Phone 155
Masonic Temple
Staunton :: Virginia

**WORTHINGTON
HARDWARE
COMPANY**

INCORPORATED

O—O

A
FULL
LINE OF

CUTLERY
AND
FLASHLIGHTS

O—O

H—A—R—D—W—A—R—E

O—O

STAUNTON
VIRGINIA

LORETTA BEAUTY SHOPPE

AND

Beverly Dress and Hat Shop

Seven South New Street
Staunton :: Virginia

COMPLETE SATISFACTION AND COMFORT

THAT IS WHY I ALWAYS CALL

RANDOL'S TAXI

21 N. New St. ————— Staunton, Va.

Phone 915

SPECIAL ATTENTION TO SCHOOL TRADE
AND LONG TRIPS

ALSO B. & O. AND C. & O. TRANSFER SERVICE

General Hauling



SCHOOL JEWELRY

H. L. LANG and COMPANY, JEWELERS

Staunton :: :: :: :: :: Virginia

Dunedin Coal Company

INCORPORATED

O O

SALES OFFICE

A. ERSKINE MILLER, PRESIDENT

HUGH B. SPROUL, JR., TREASURER

Professional Building :: :: Staunton, Virginia

O — O

MINES IN FAYETTE COUNTY, WEST VIRGINIA

DOMESTIC RUN OF MINE COAL

Quality—Navy A 1

THE
HOME OF
NOVELTIES
DIAMONDS, WATCHES

D. L. SWITZER

Staunton, Virginia

Jewelry Repairing
"Every Day is a Gift Day"

WRIGHTS

STAUNTON :: VIRGINIA

Importers

Art Dealers Booksellers

G—I—F—T—S

For Discriminating People

SAMUEL B. WRIGHT
CATHERINE B. WRIGHT

Insurance on Personal Effects

Covering ALL Hazards

INCLUDING

FIRE

T H E F T

TRANSPORTATION

at the college,
in hotels, or boarding
houses or when traveling

C H A R G E S
R E A S O N A B L E

W. J. PERRY CORPORATION

MASONIC TEMPLE

Staunton :: Virginia

Edward Crist

o—o

Photographer

F O R

THE BLUESTOCKING

o—o

Staunton — — — — Buena Vista
Virginia

CAPS GOWNS AND HOODS

FOR ALL DEGREES

The
Oldest
Organization
of its Kind in
America Supplying the
Outstanding Universities,
Colleges and Schools with

ACADEMIC COSTUMES

*Sole Depository of the Intercollegiate
Bureau of Academic
Costume*

COTRELL AND LEONARD

Established 1832
ALBANY, NEW YORK

COMPLIMENTS

OF

THE HUGER-DAVIDSON SALE CO., INC.

*Lexington, Virginia
Pocahontas, Virginia
Staunton, Virginia*

T H - E

H O U S E

O F

FREEZING
PRODUCTS

SINGER BAKING COMPANY

BAKERS
OF
BREAD - CAKES
PASTRIES
PIES

North Central Avenue
Staunton :: Virginia

COMPLIMENTS

Beautify Your Home

It takes little to make a perfectly livable room. A touch of color in the right place... cretonnes of bright pattern beautify a window, colorful slip covers for an old chair make just that difference. Let us show you.

MAC V. WHEAT CO.

12 E. Frederick St. Phone 1497

BEST WISHES

FROM

WARNER BROS.

NEW AND STRAND

—THEATRES—

Always the Best in Entertainment

JOHN FALLON

—FLORIST—

CORSAGES AND CUT FLOWER WORK

of every description

STANTON :: :: VIRGINIA

Phone 763-J

STATEMENT
OF THE CONDITION OF THE
Augusta National Bank of Staunton

STAUNTON, VIRGINIA

AT CLOSE OF BUSINESS DECEMBER 31, 1931

(Condensed)

RESOURCES		LIABILITIES	
Loans and Discounts	\$1,297,482.02	Capital Stock	\$ 100,000.00
Overdrafts	25.36	Surplus and Undivided	
U. S. Bonds	101,000.00	Profits	432,059.01
Bonds, Securities, etc.	281,025.93	Circulation	100,000.00
Banking House, Furniture, etc.	68,471.63	Deposits	1,405,619.83
Other Real Estate Owned	16,489.91	Reserve	25,000.00
Cash and Due from Banks	298,183.99		
	<hr/> \$2,062,678.84		<hr/> \$2,062,678.84

TRUST DEPARTMENT

**TIP TOP
MEAT MARKET**

Q-U-A-L-I-T-Y
FRESH AND CURED
M-E-A-T-S

"Taste the Difference"

Hotel Stonewall Jackson

STAUNTON, VIRGINIA



VIRGINIA'S MOST DISTINCTIVE HOTEL

Eighteen Holes Golf
Fifty Room Club House

MANAGEMENT A. T. MOORE

Write for "Seven Glorious Days" in Shenandoah Valley

Augusta Military Academy

A School of Old Traditions—NEW EQUIPMENT

Large Gymnasium just Completed—Glass Enclosed Swimming Pool Attached

GRADUATES IN FORTY-TWO UNIVERSITIES AND COLLEGES

In the Beautiful and Healthful Shenandoah Valley, free from distracting influences. Intensive application under thoroughly equipped instructors responsible for success of students in many colleges. Accredited. Boys from twenty-five states. R. O. T. C. Winning teams developed through policy of athletics for all. Sixty-sixth year. Catalog.

COLONEL T. J. ROLLER or MAJOR C. S. ROLLER, PRINCIPALS

Fort Defiance :: :: :: :: :: :: Virginia

The McClure
PRINTERS
BINDERS
ENGRAVERS
19 WEST FREDERICK STREET
STAUNTON, VA

The School Annual



WE DO not think—not publicly, at least—that we are the only people who print school annuals properly. Many printers do as good work as we, and a few do better, perhaps. But those that do better, charge a great deal more. We believe we are the second largest printers of annuals in Virginia. We know that year after year we print the same books, which indicates that our customers like our work. Furthermore we usually do any new annual that is put out in our territory, which indicates that our work is appreciated where we are best known. We always strive to carry out intelligently and in good taste the theme a staff selects. “Intelligence,” “good taste,” what wonderful words are these when applied to an annual. They mean that the printer is to enter into the spirit of the work and transfer to the printed page the vision of beauty pictured in the mind of the editor. They mean that he is to guard the staff against the visionary, the gaudy, and the needlessly expensive, by constructive and conscientious advice.

THE McCLURE COMPANY

INCORPORATED

19 West Frederick Street :: Staunton, Virginia





LIBRARY OF
MARY BALDWIN COLLEGE



MARY BALDWIN COLLEGE LIBRARY



3 3764 00126 7303